

# INDAGINE CONOSCITIVA ANNO 2025

*Dati Società Italiana di Chirurgia dell'Obesità e delle malattie metaboliche*

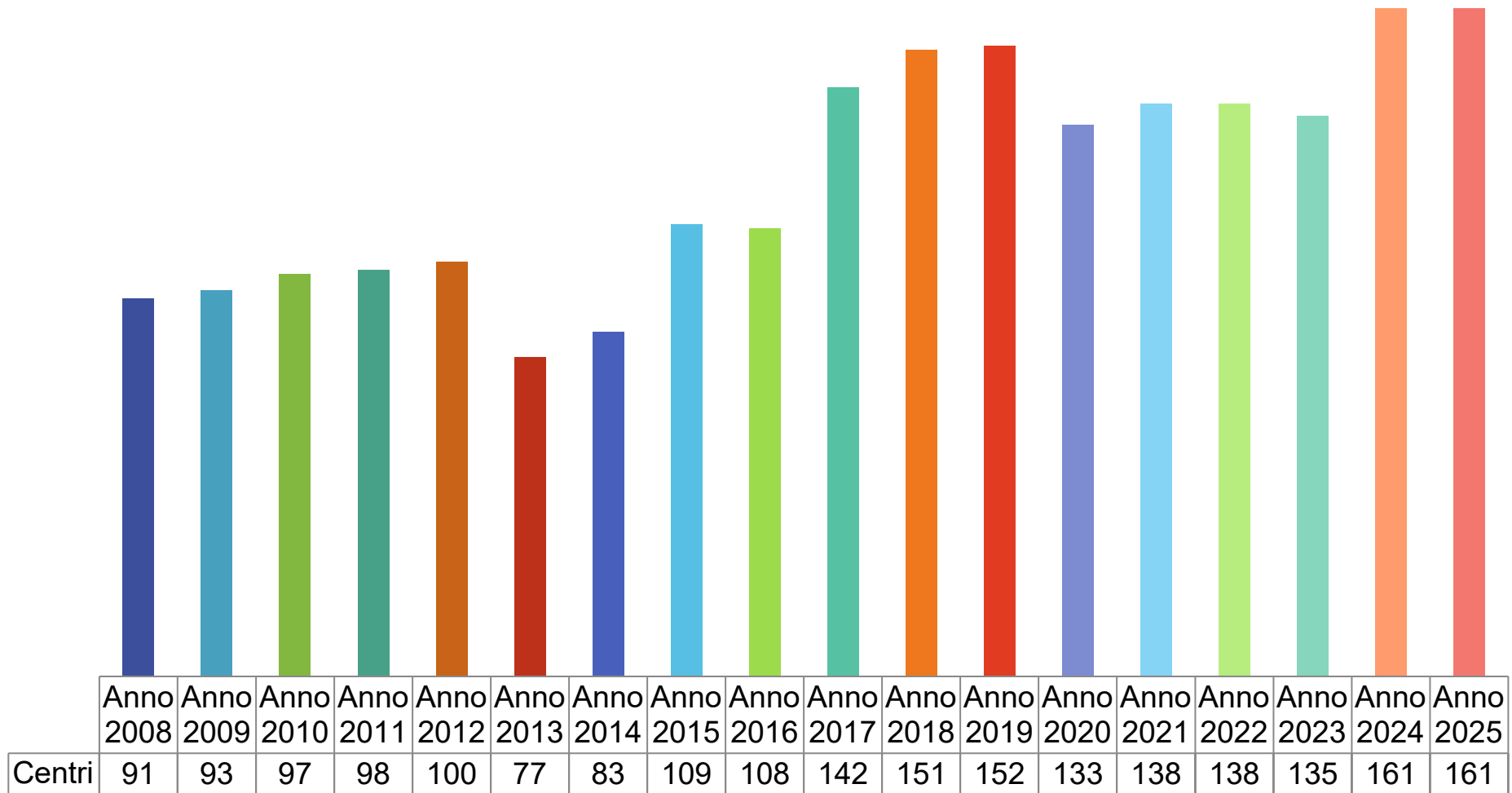
---

*Presidente M. DE LUCA*

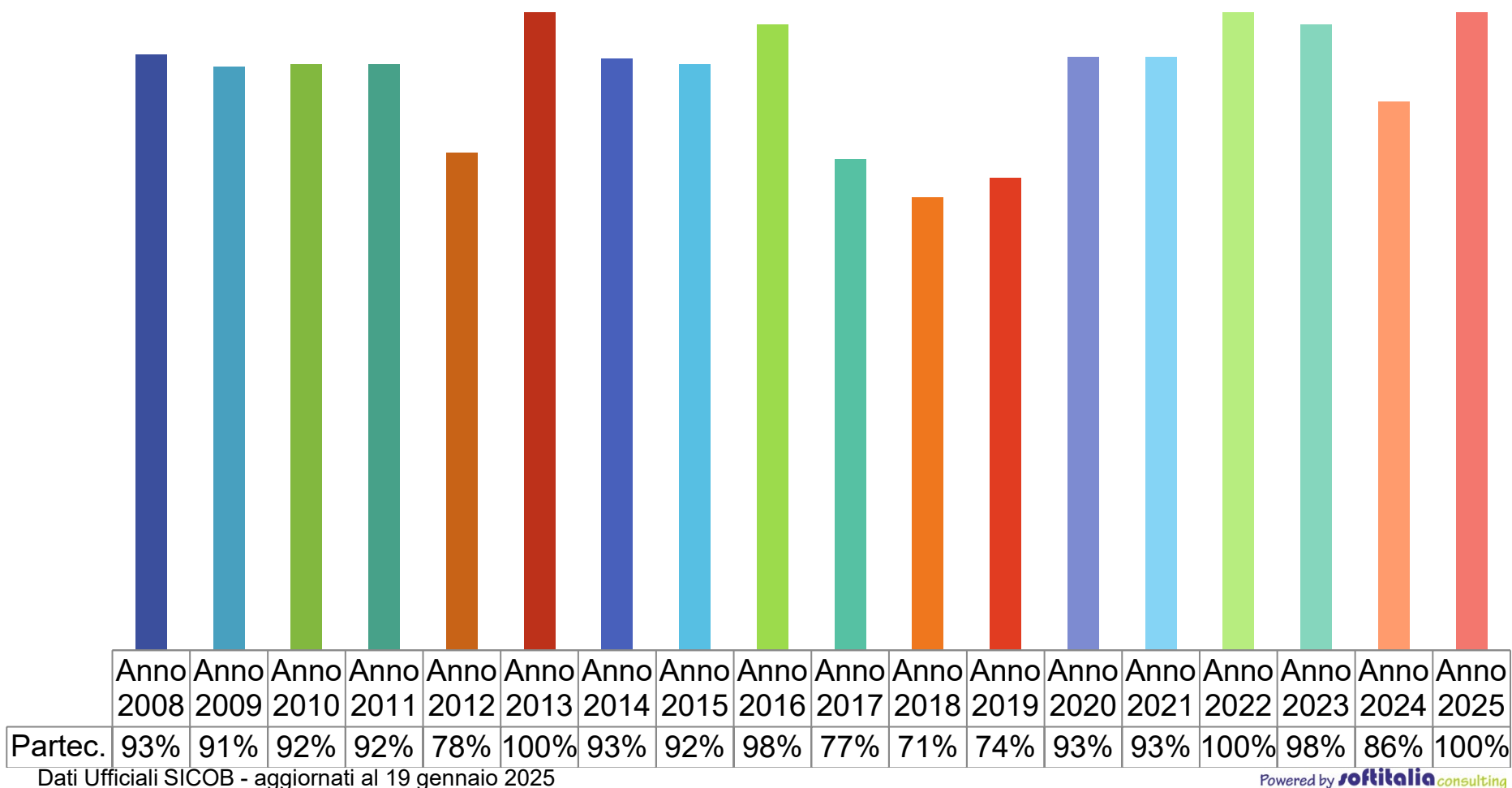
*Dati aggiornati al 19 gennaio 2025*



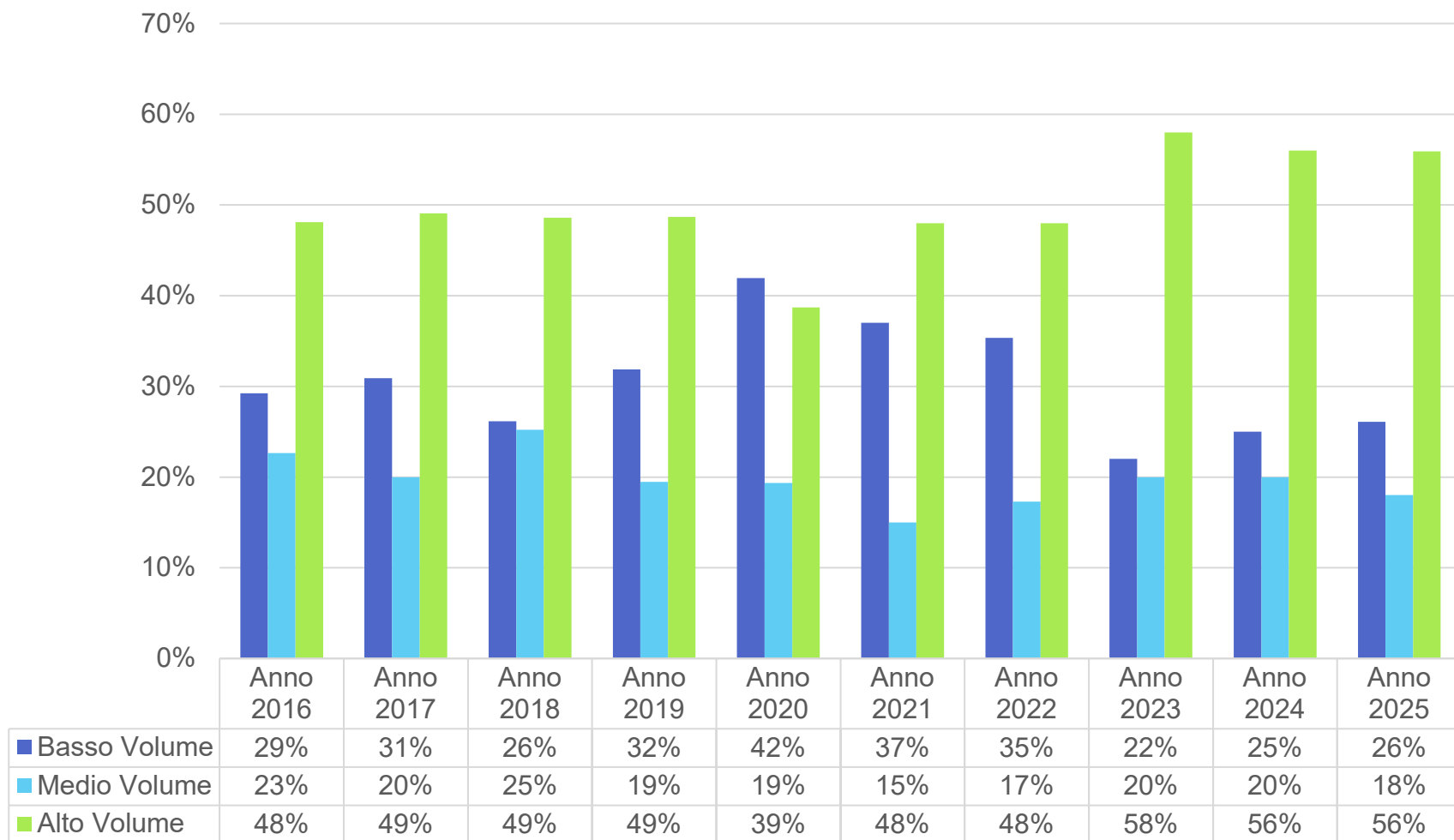
# Centri SICOB Censiti dal 2008 al 2025



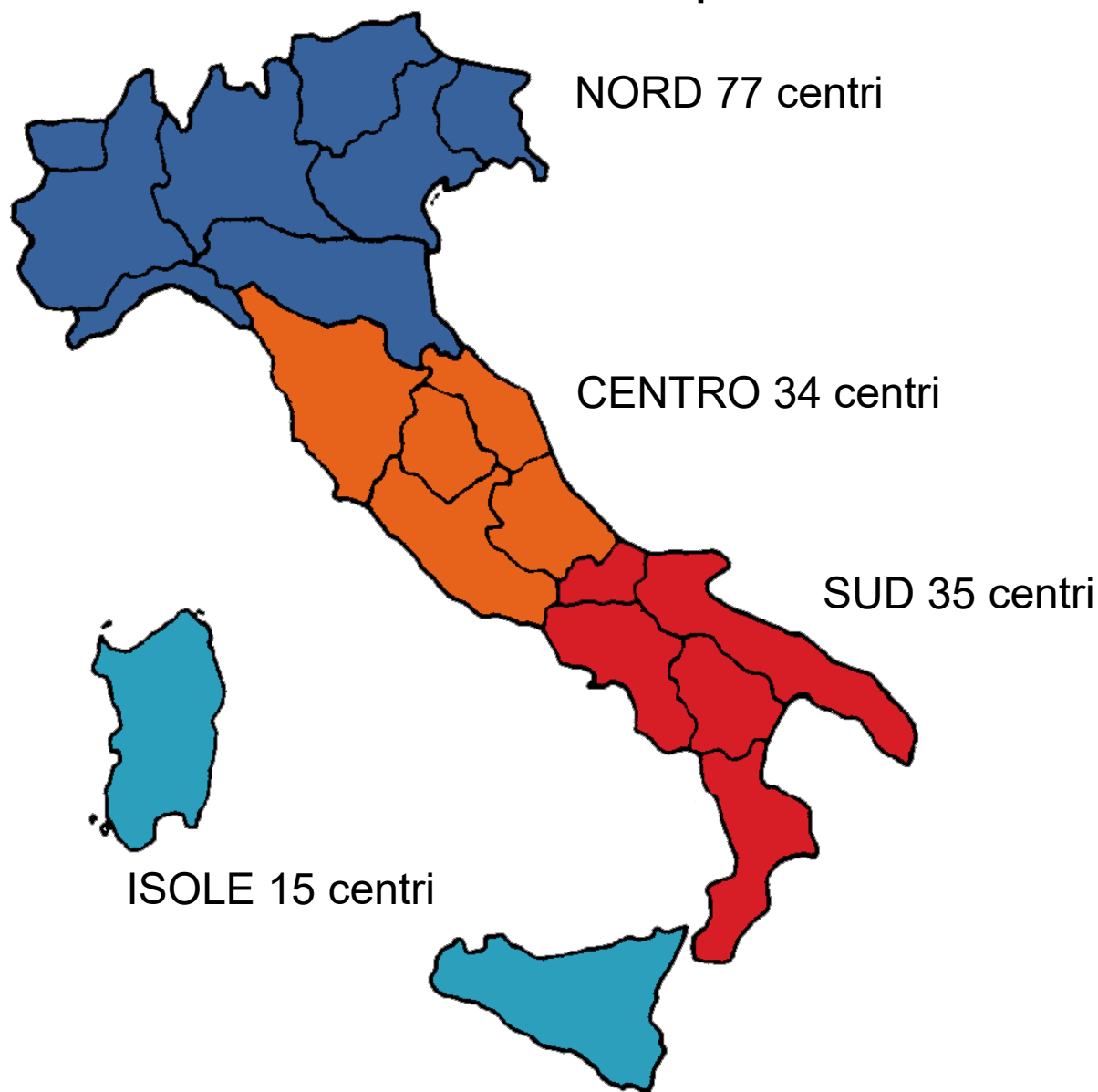
# 161 Centri SICOB hanno risposto all'indagine conoscitiva



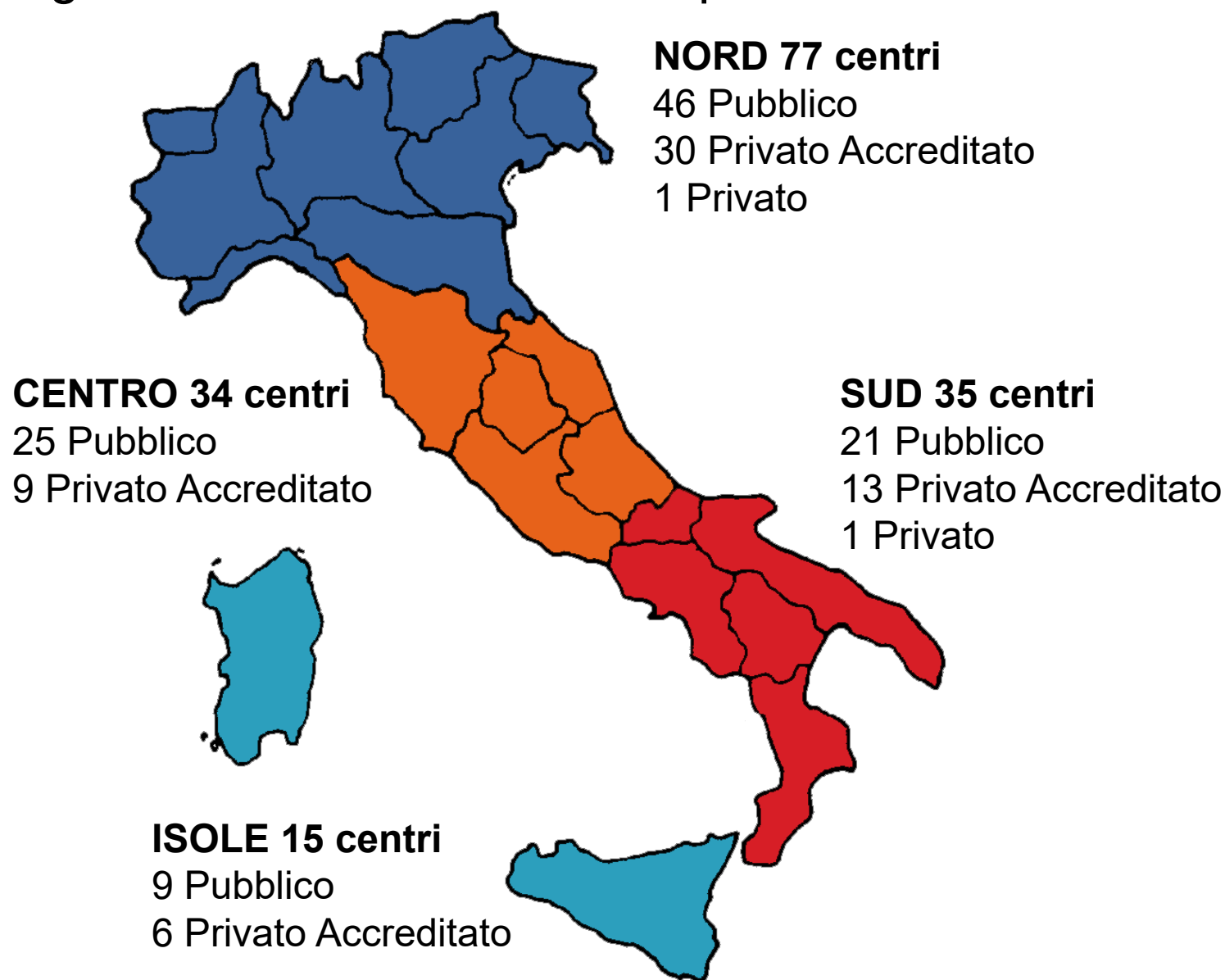
# Evoluzione del volume dei centri



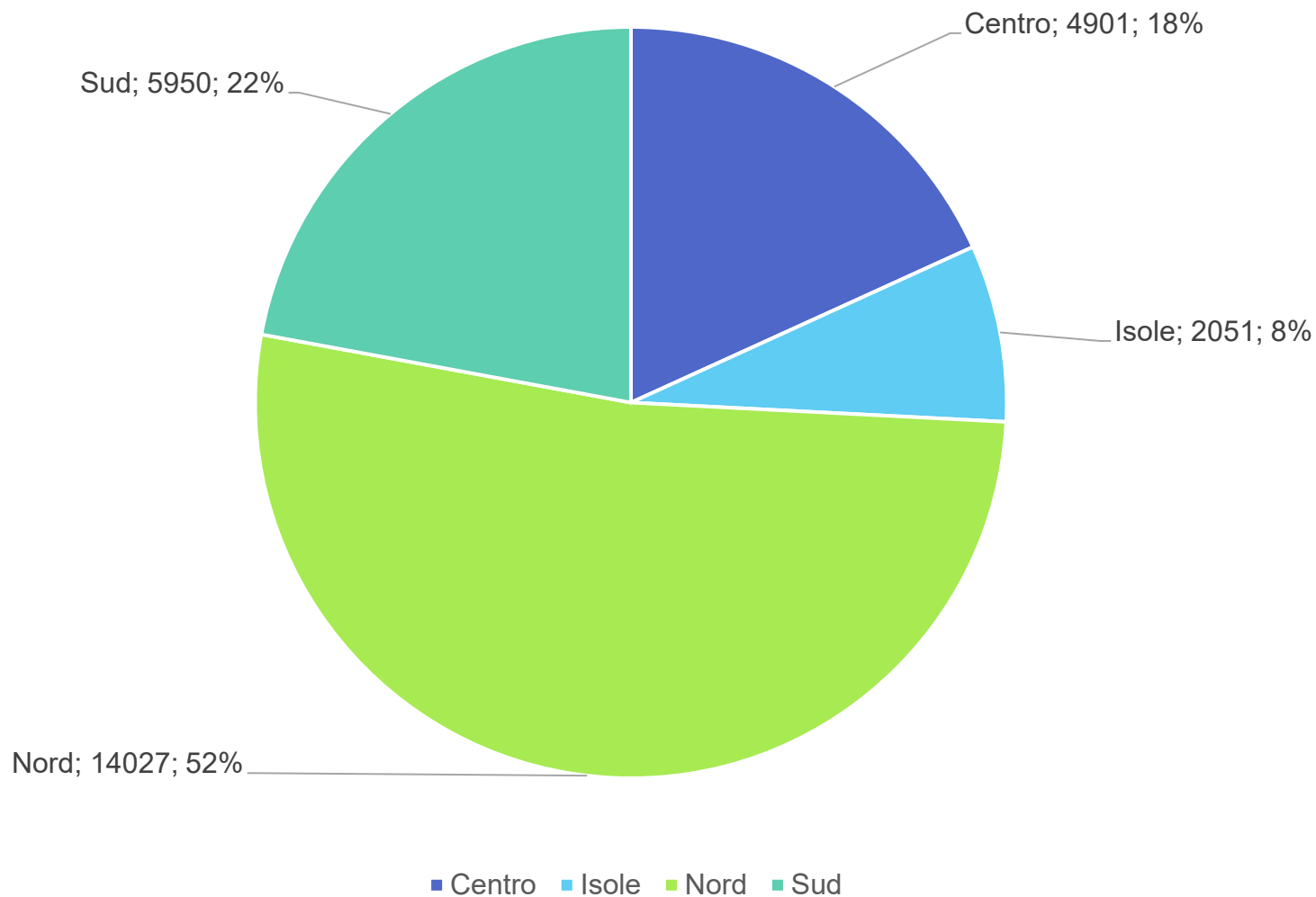
# Distribuzione dei **161** centri SICOB rispondenti nel 2025



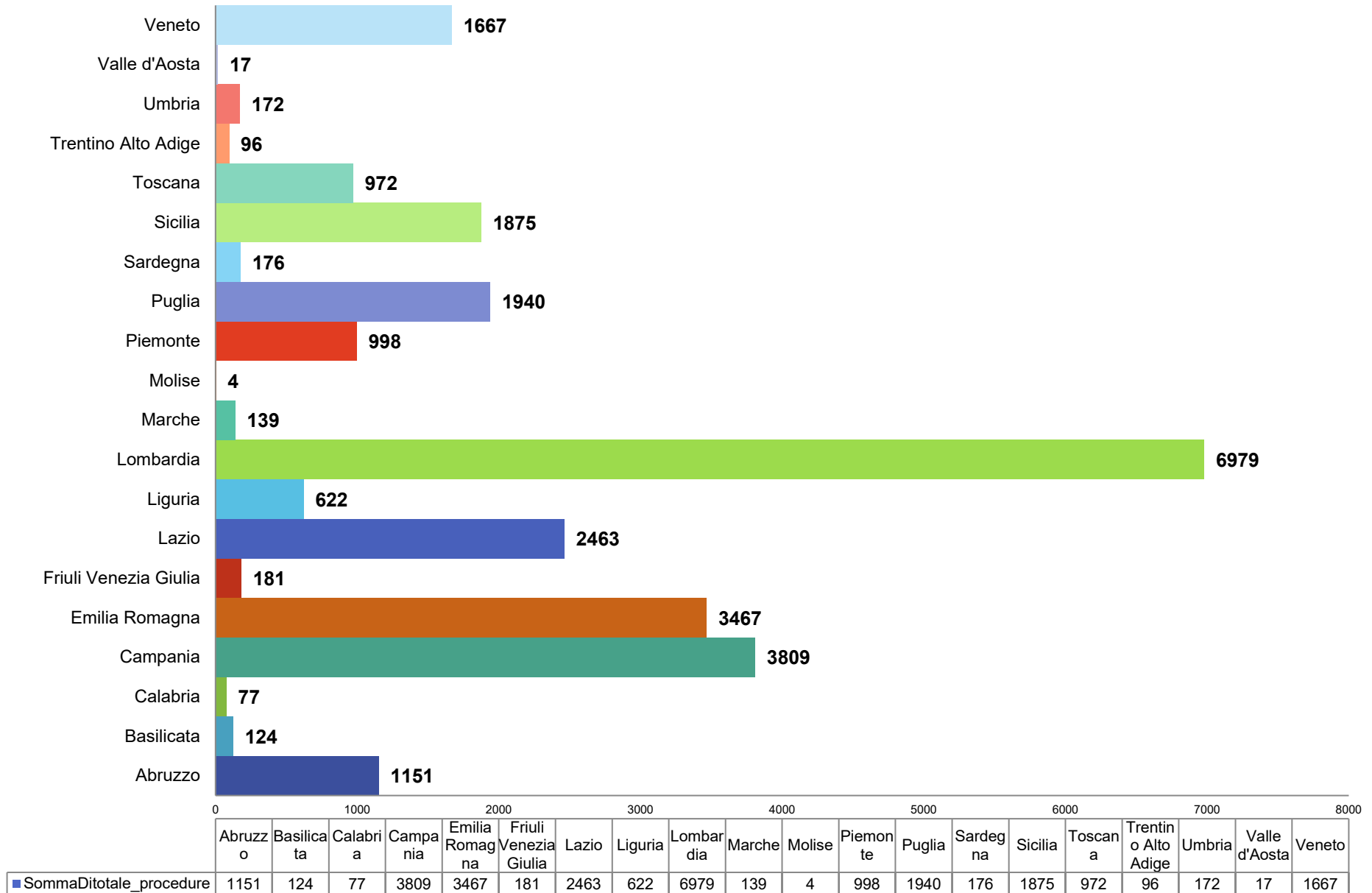
# Tipologia dei **161** centri SICOB rispondenti nel 2025



# 26.929 Interventi effettuati in Italia

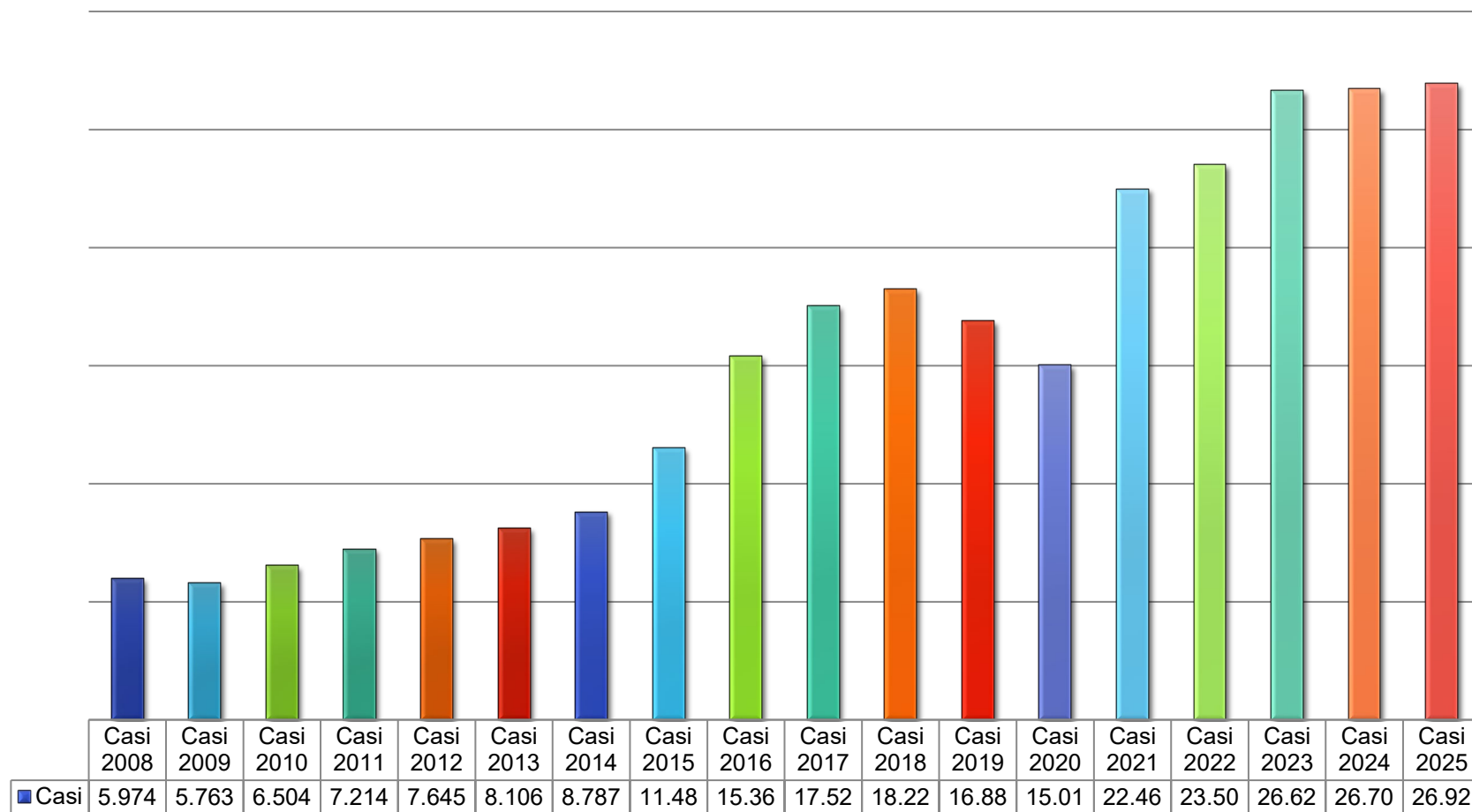


# 26.929 Interventi - Suddivisione per regione



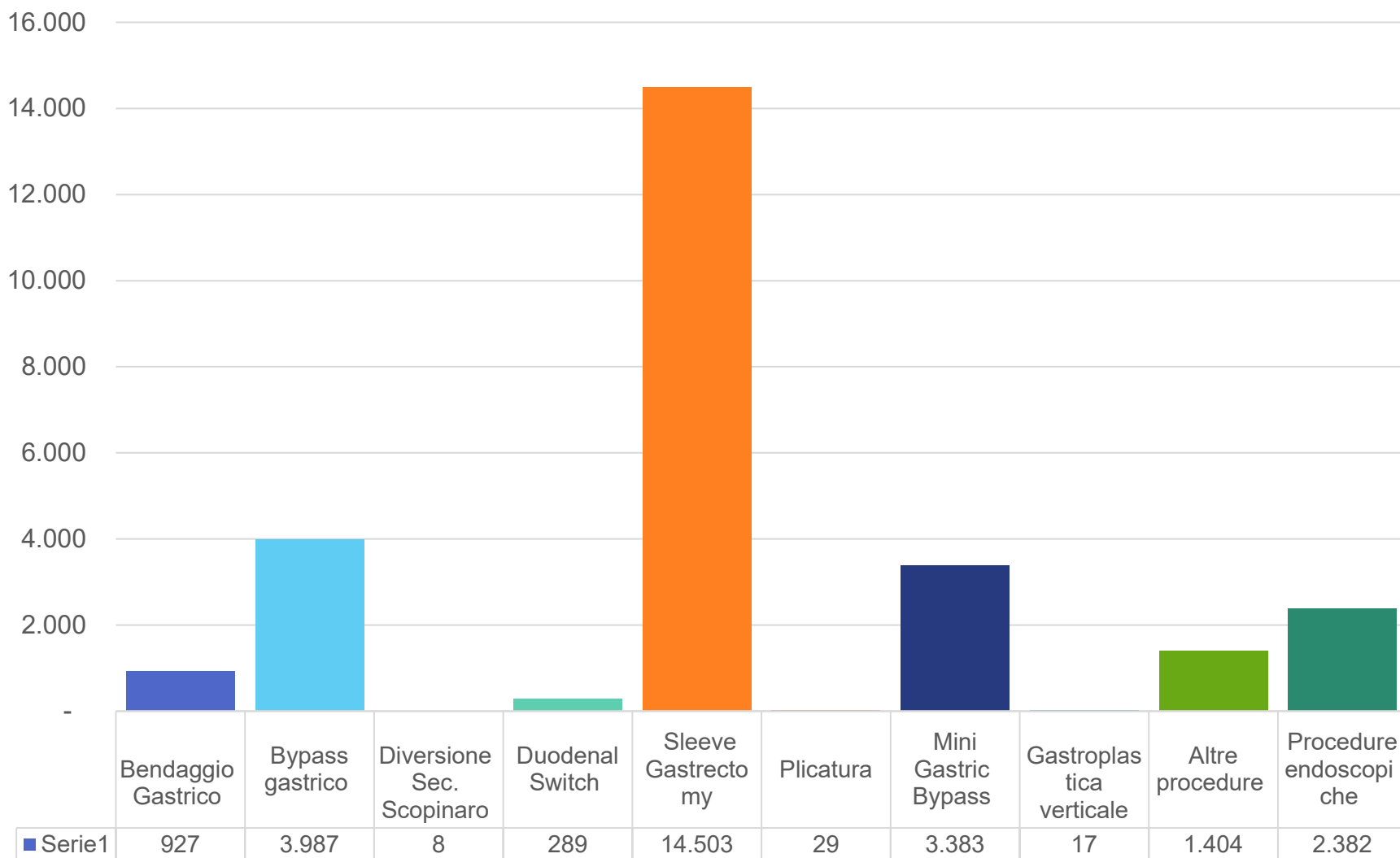


# Trend delle procedure eseguite dal 2008 al 2025



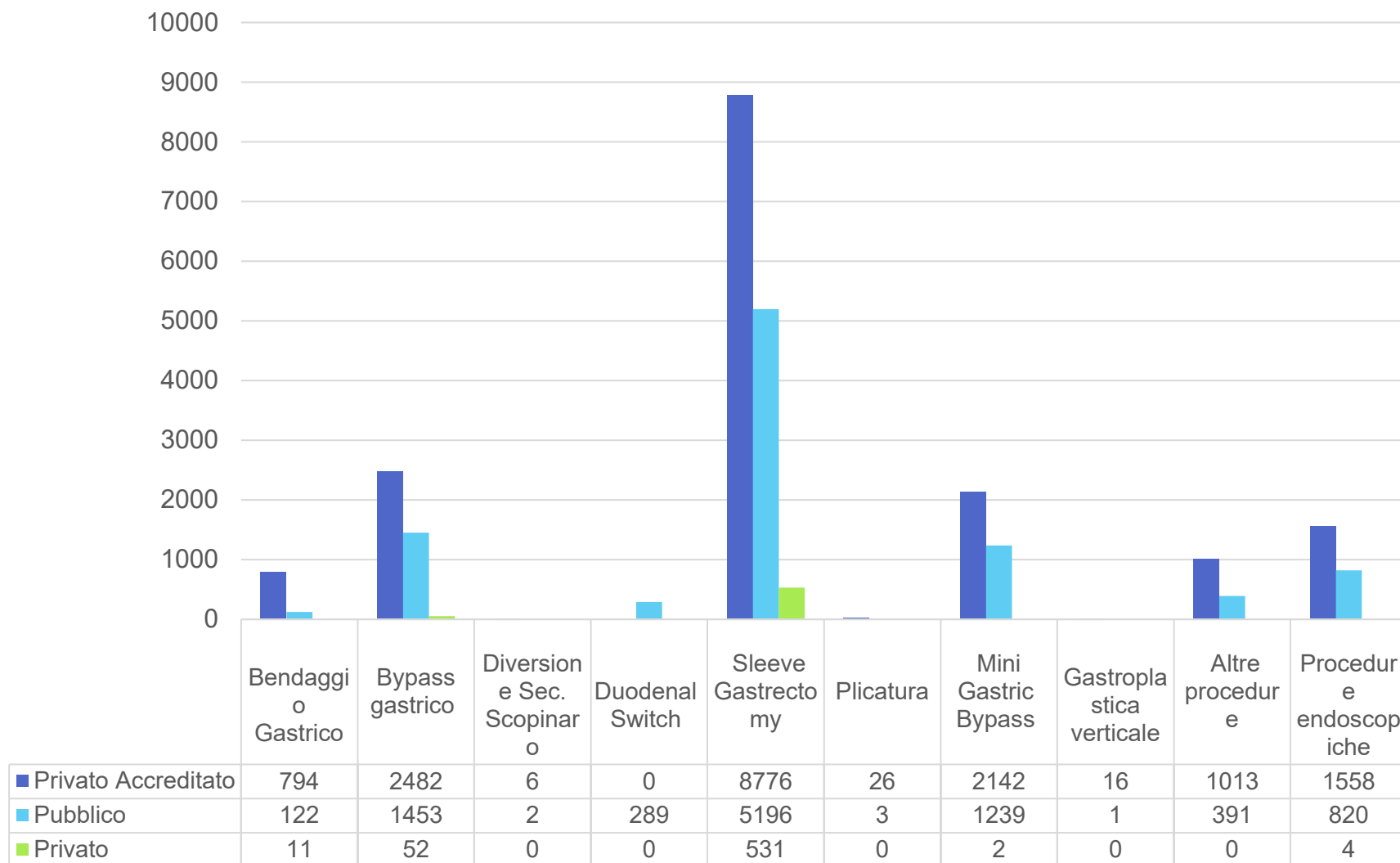
# Tipologia delle procedure eseguite nel 2025

Totale **26.929** interventi



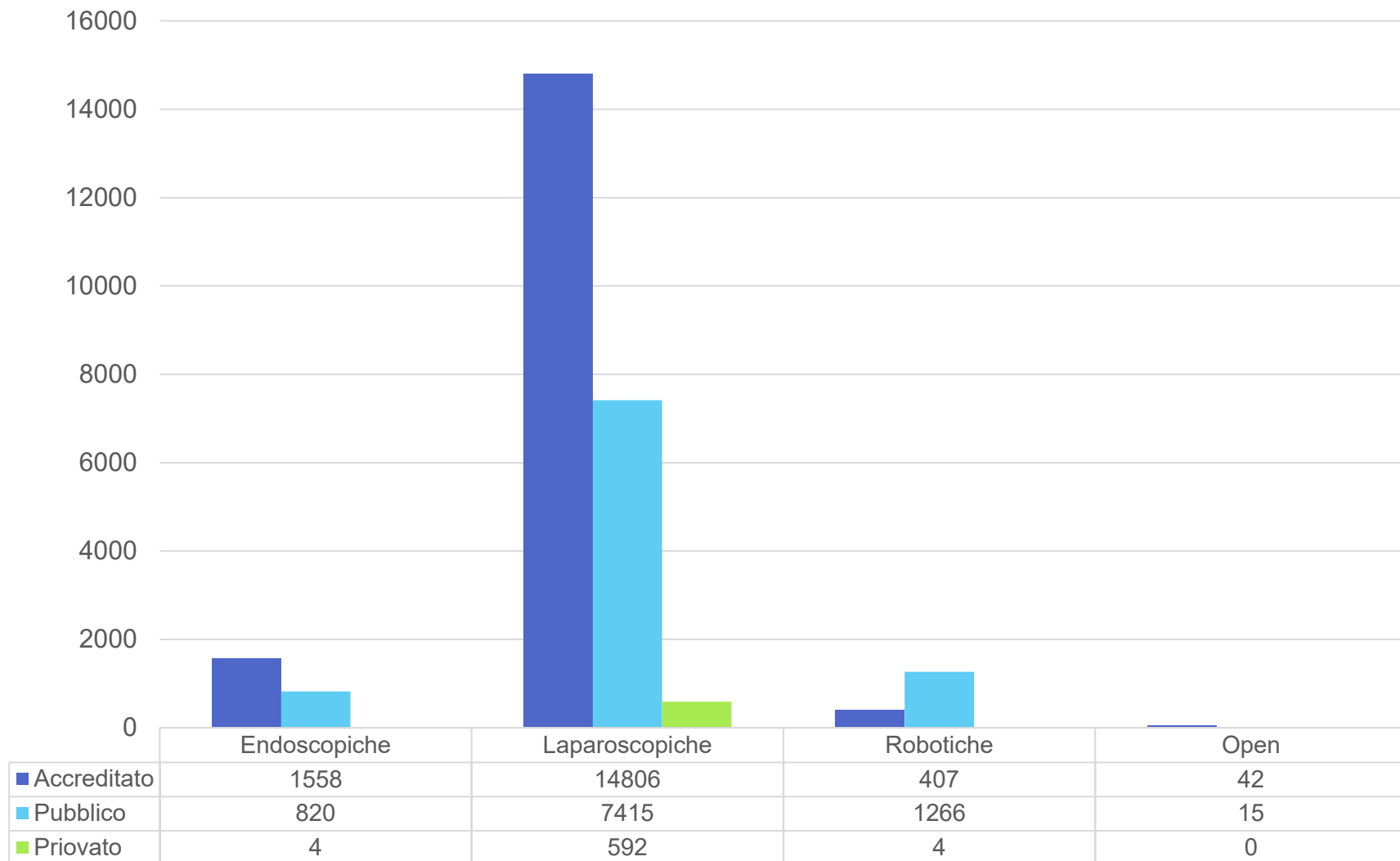
# Tipologia delle strutture per le procedure eseguite nel 2025

Totale **26.929** interventi



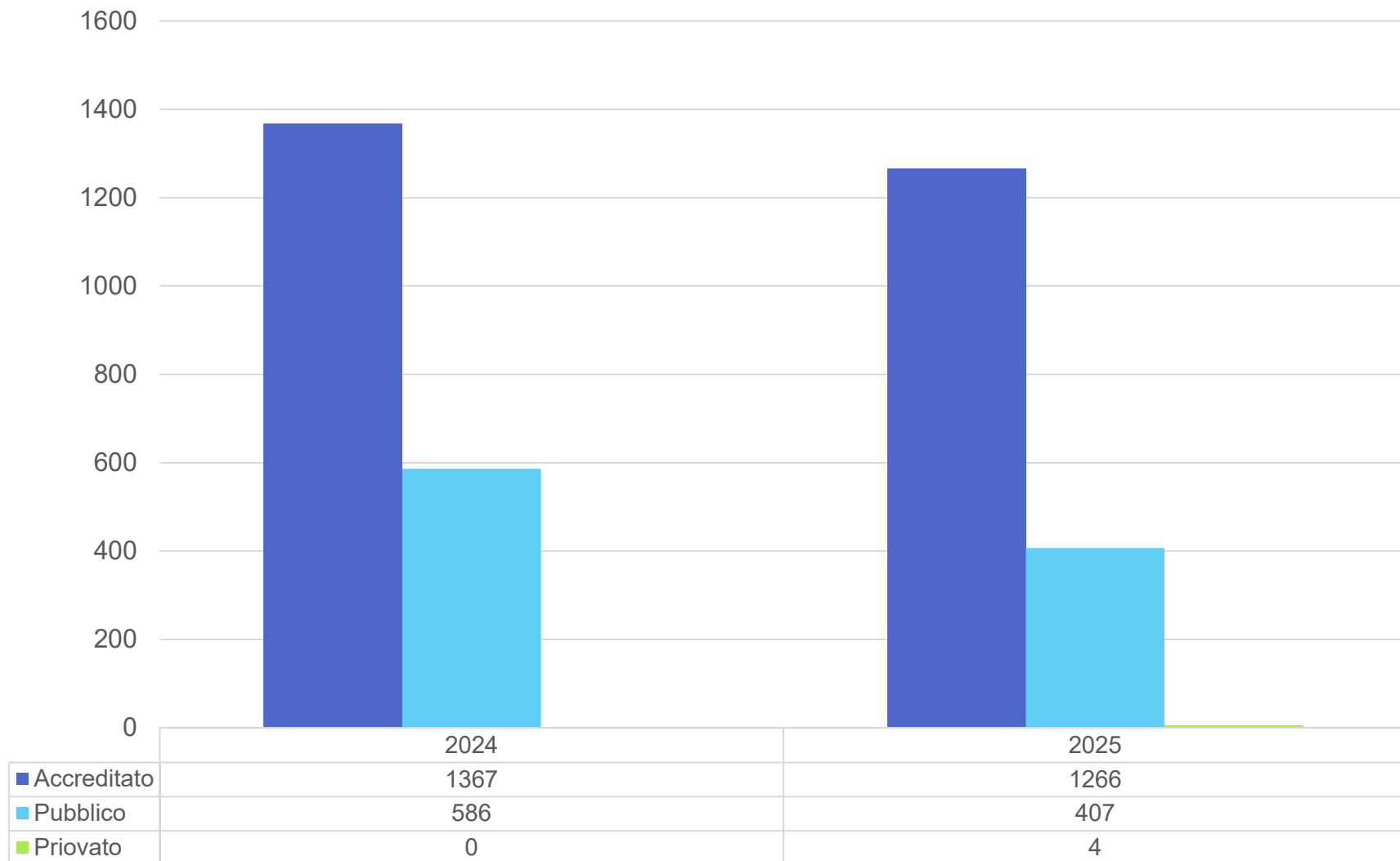
# Tipologia delle procedure eseguite nel 2025

Totale **26.929** interventi



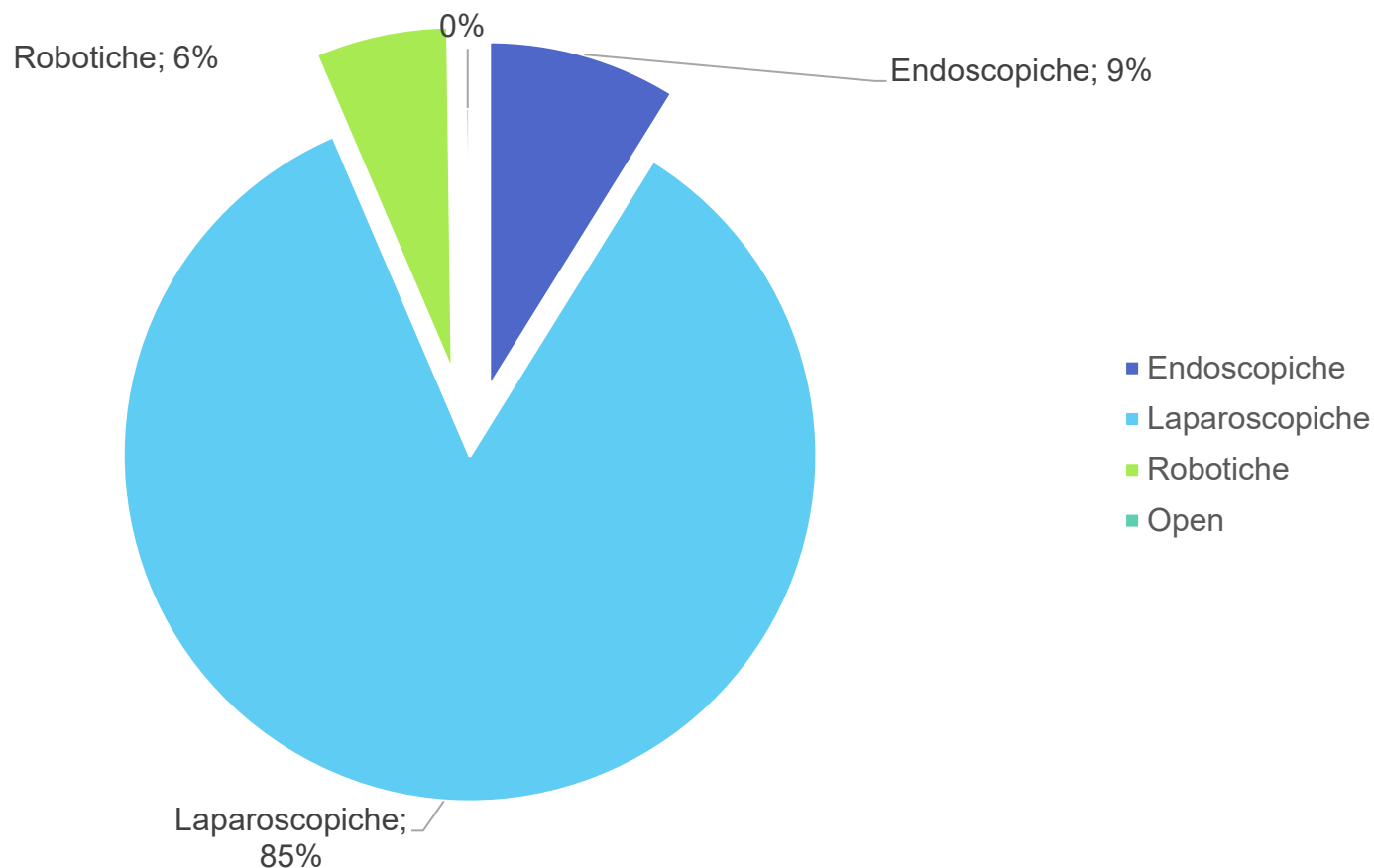
# Tipologia delle procedure Robotiche

Totale **1.677** interventi

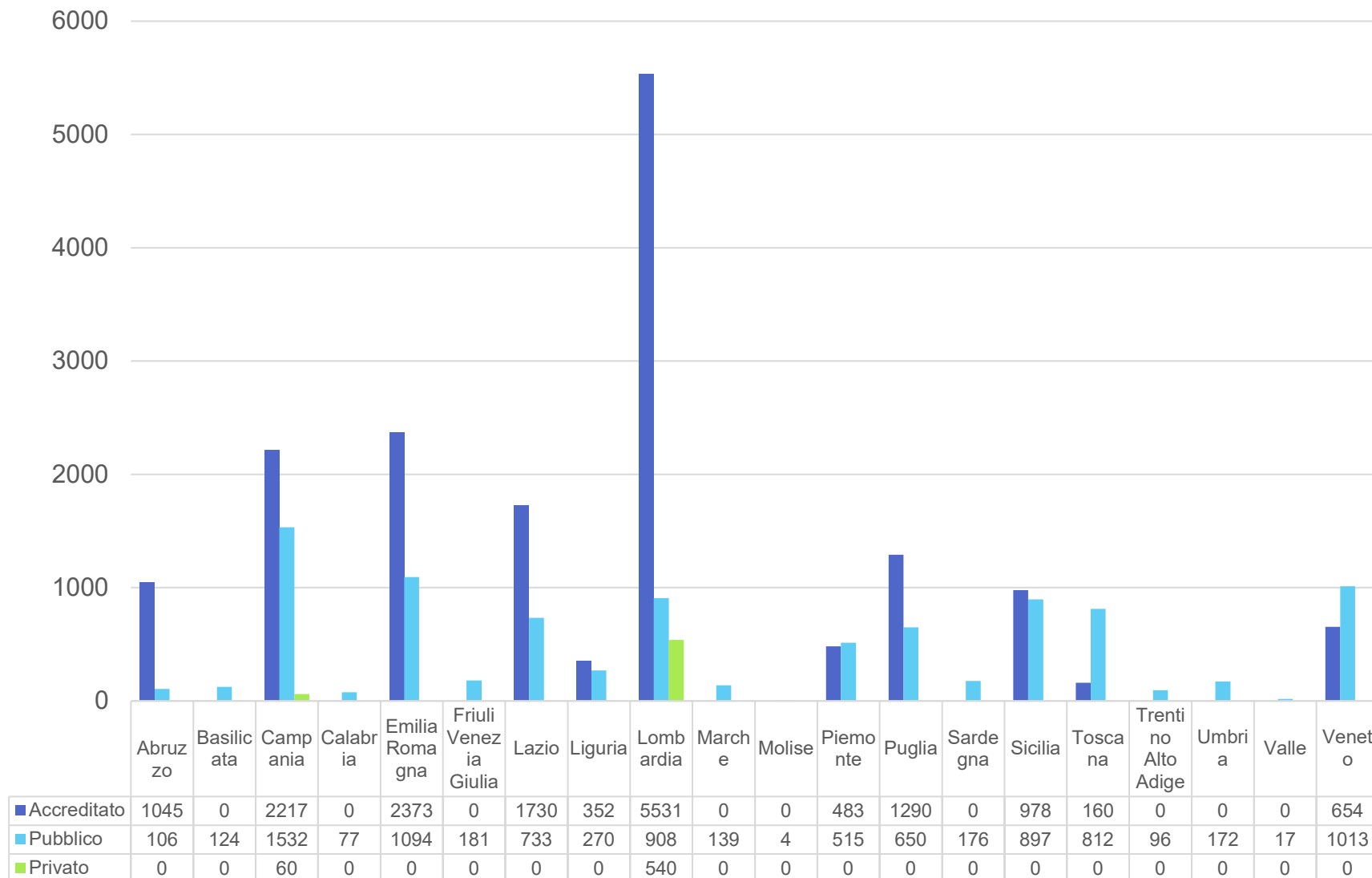


# Tipologia delle procedure eseguite nel 2025

Totale **26.929** interventi

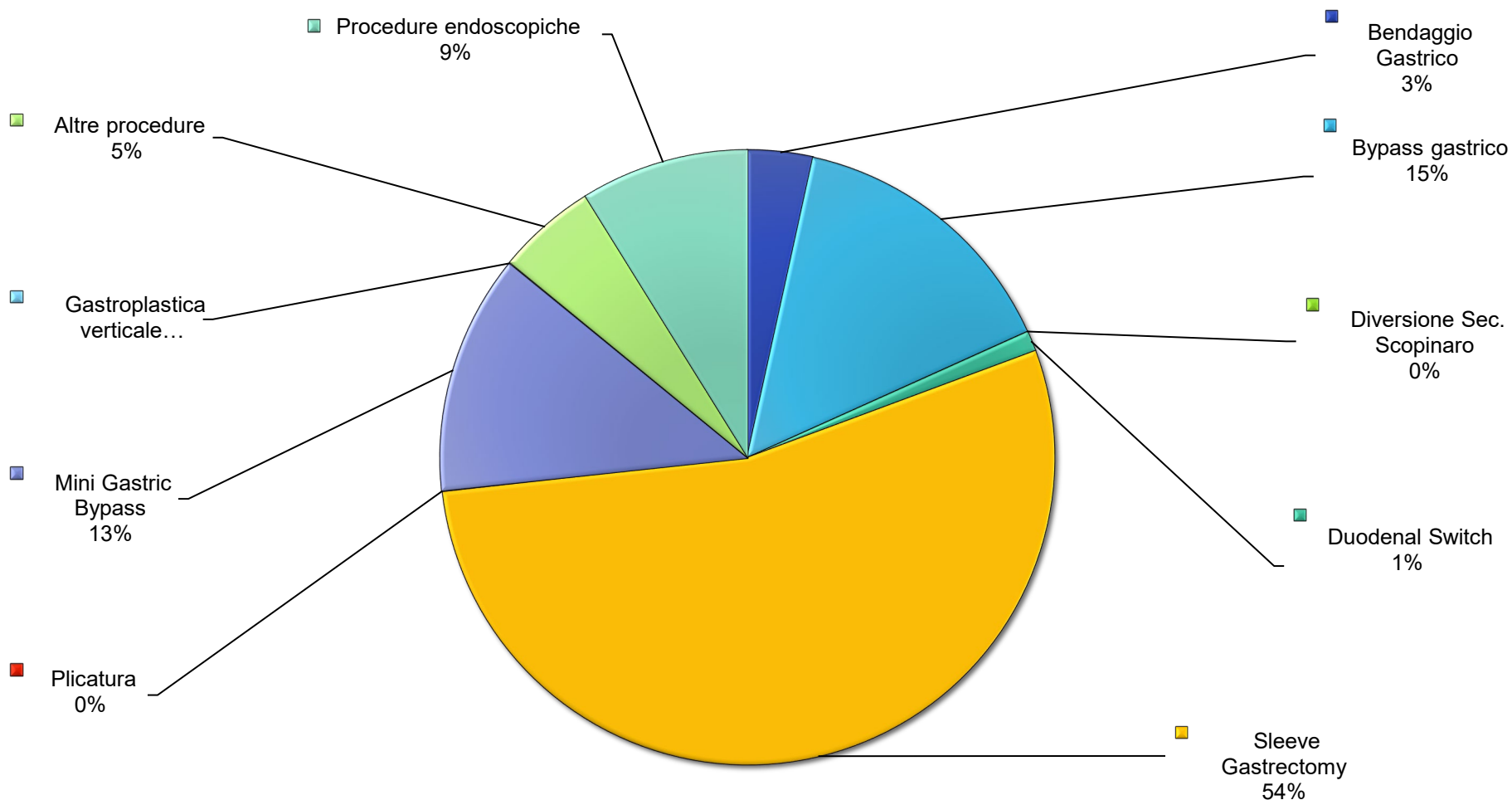


# Confronto regione procedure eseguite nel 2025



# Tipologia delle procedure eseguite nel 2025

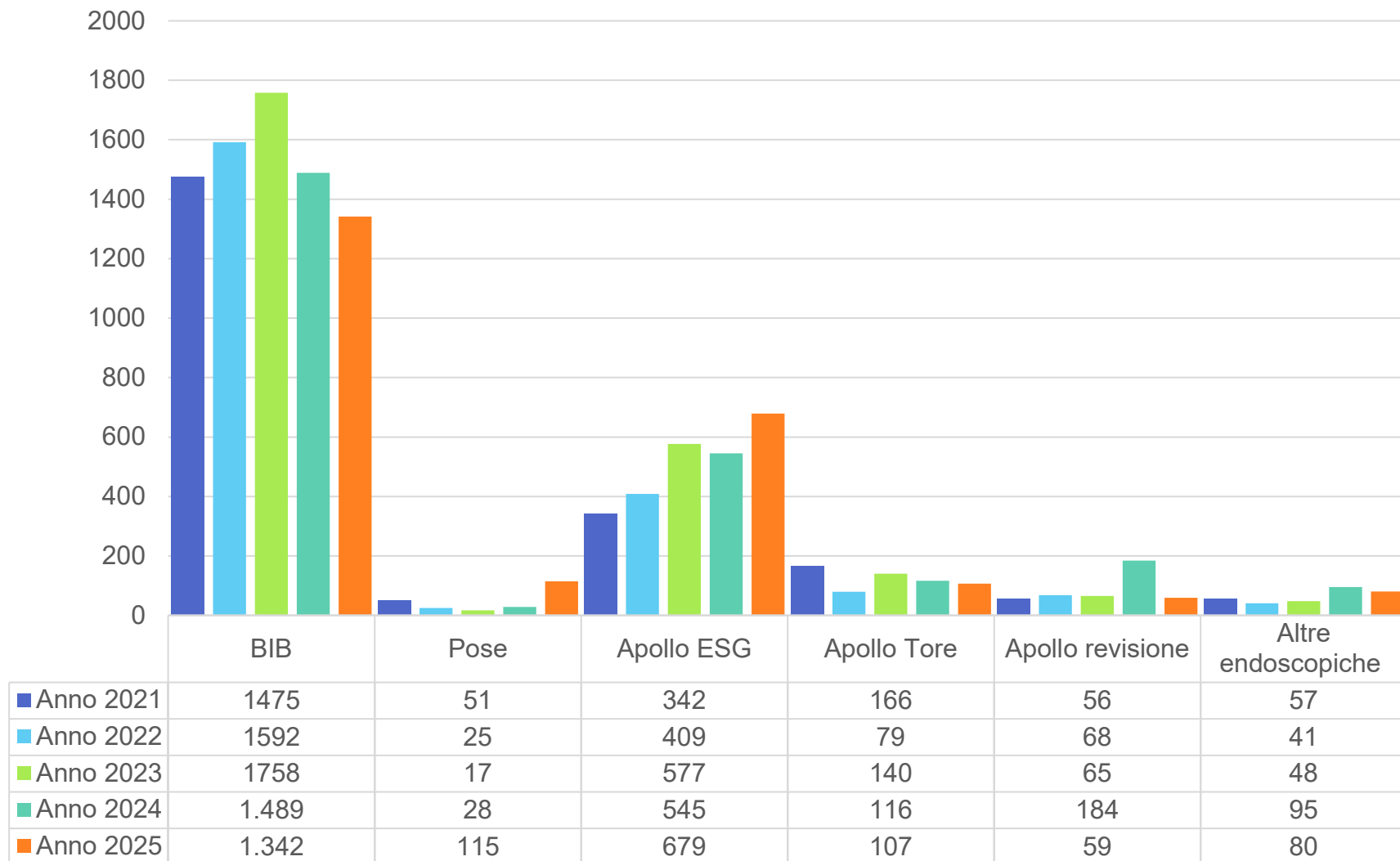
Totale **26.929** interventi



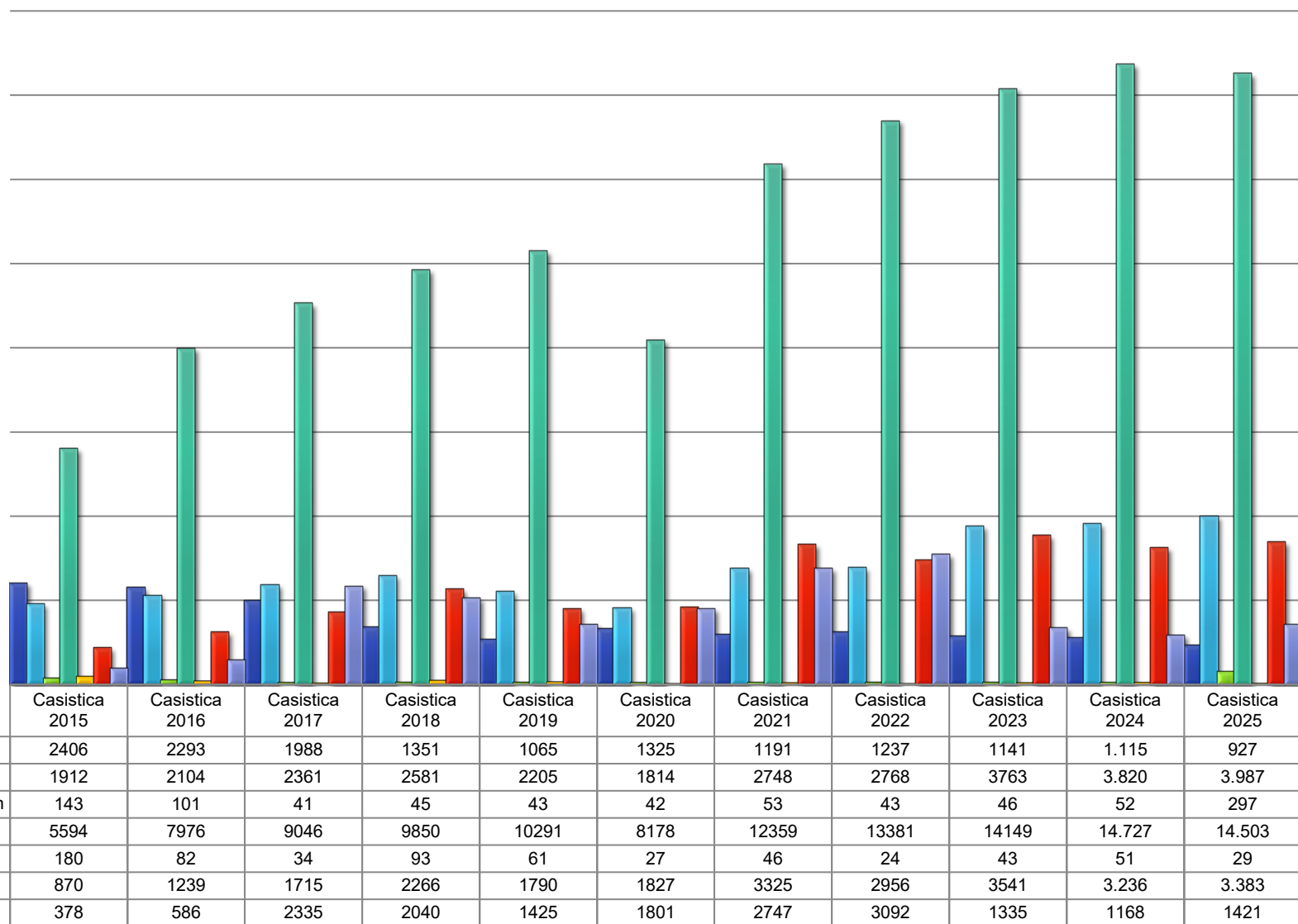


# Tipologia delle procedure endoscopiche eseguite nel 2025

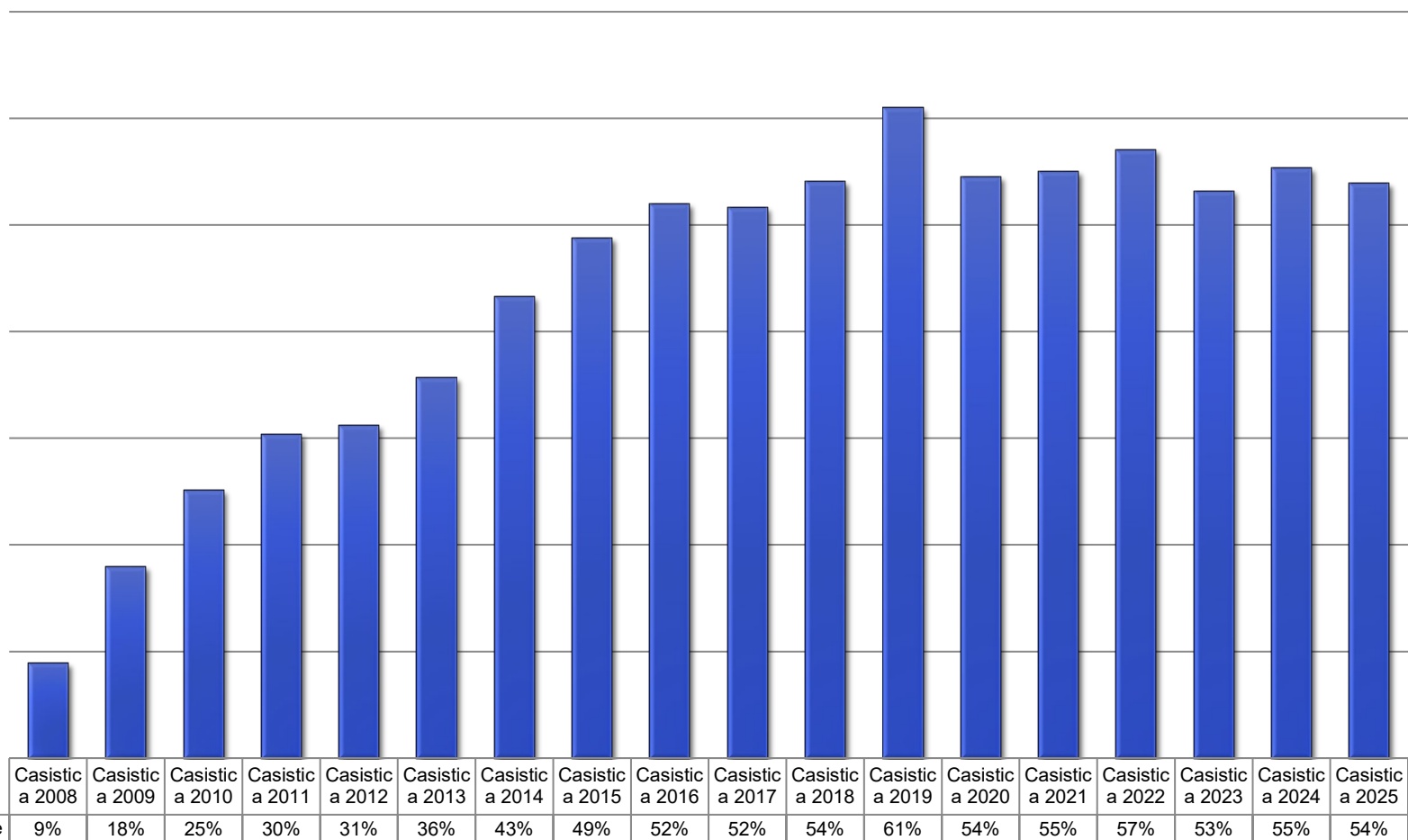
Totale **2.382** interventi



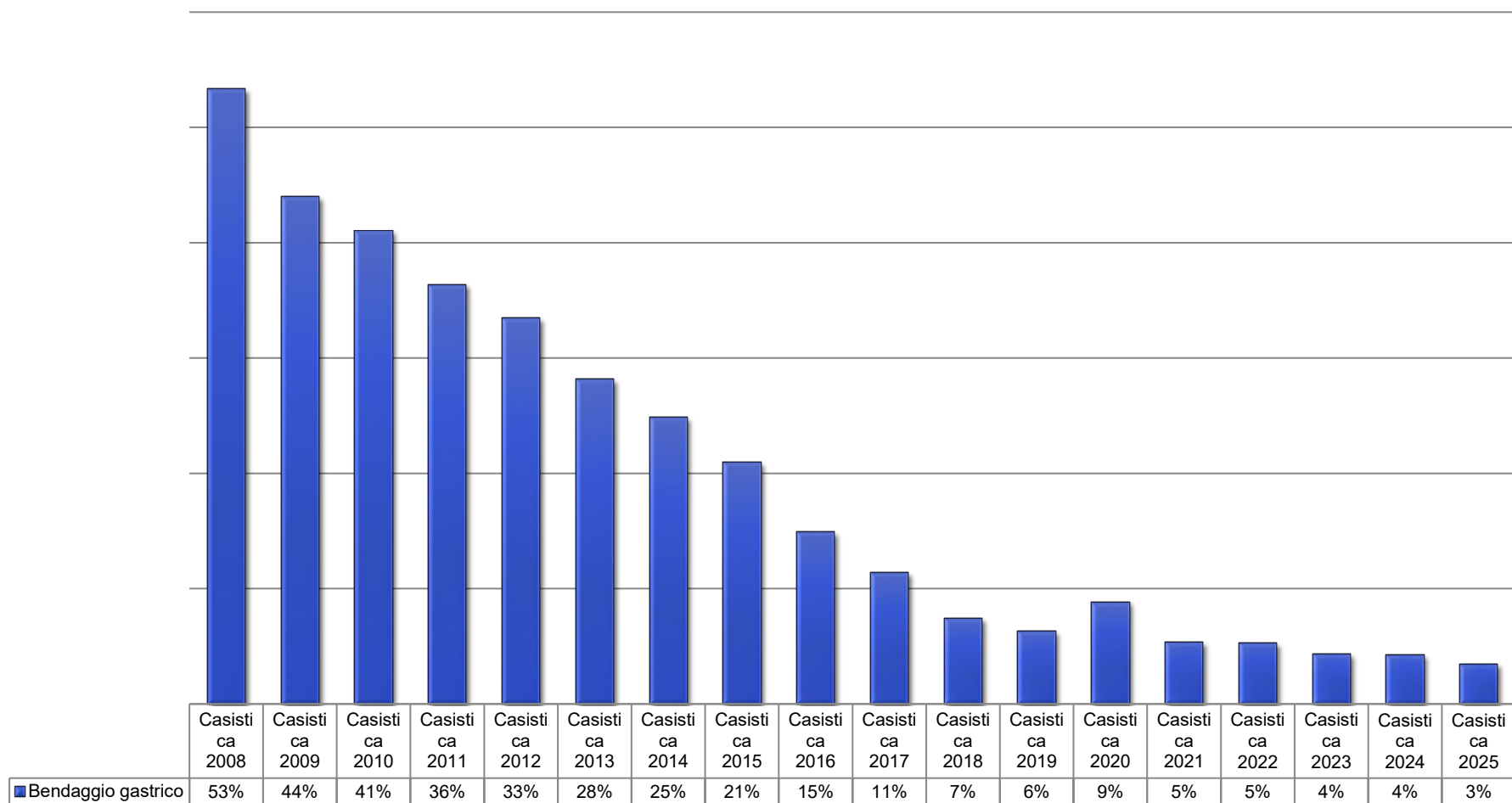
# Tipologia delle procedure eseguite dal 2014 al 2025



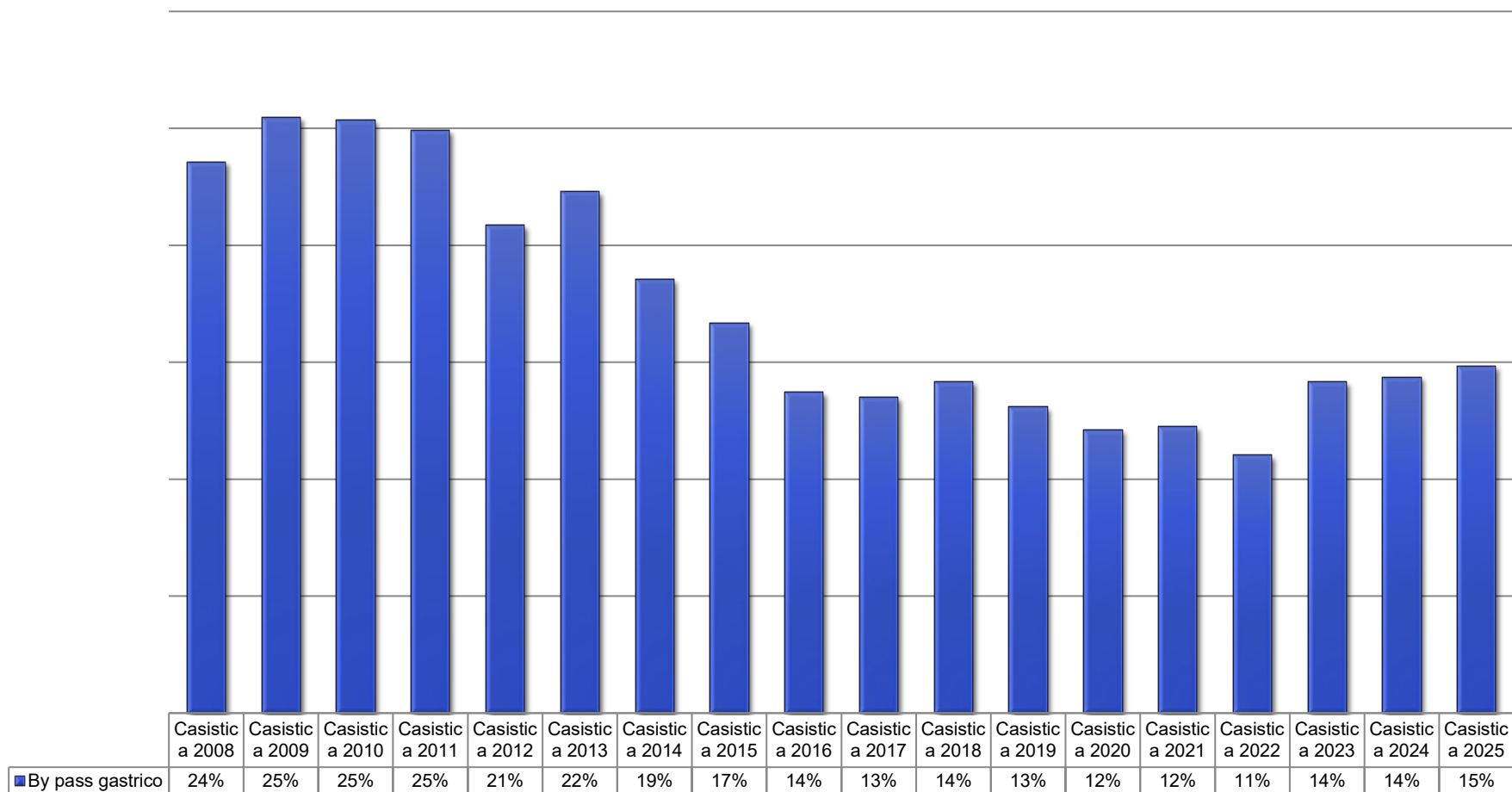
# SLEEVE Andamento Percentuale sul totale interventi



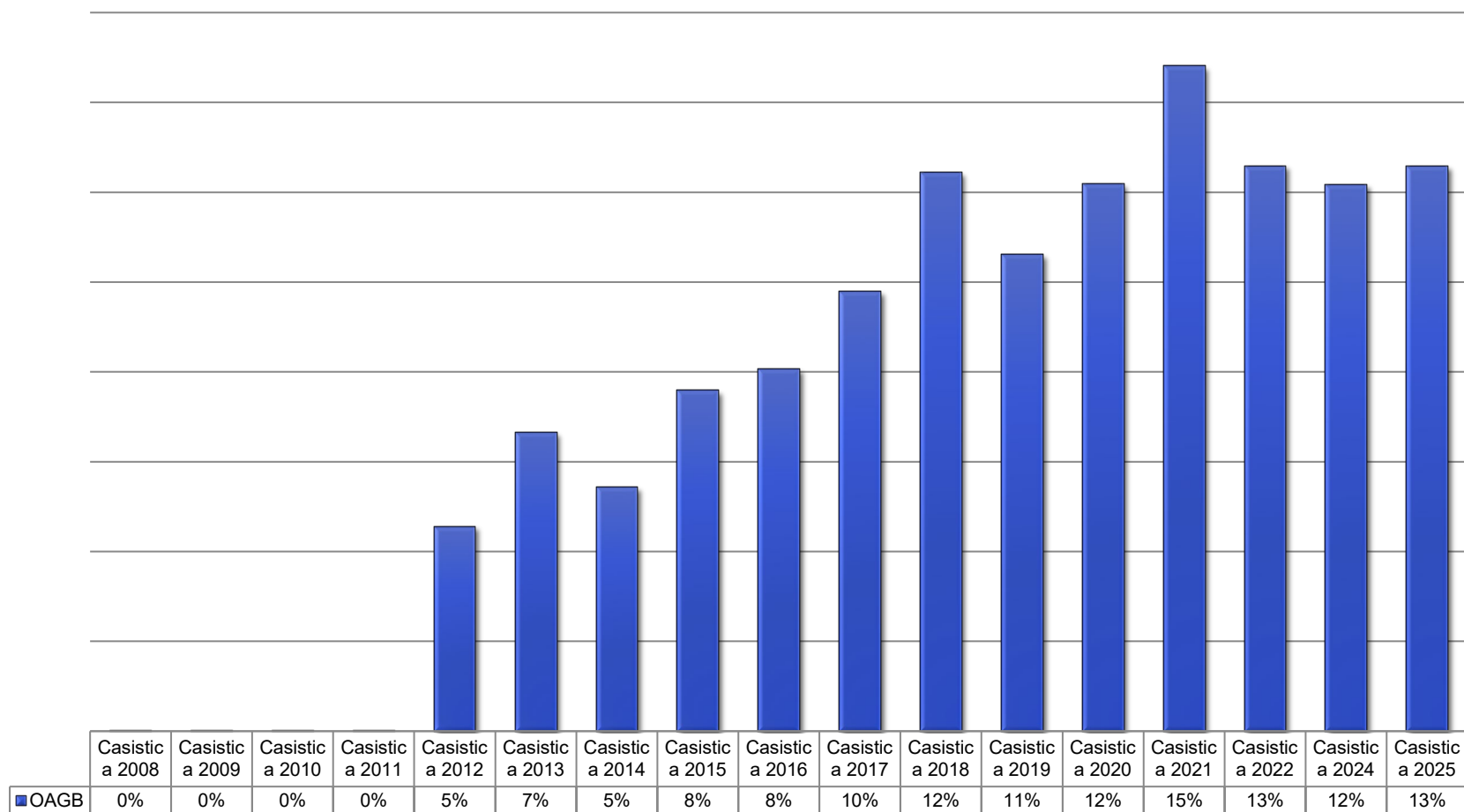
# BENDAGGI Andamento Percentuale sul totale interventi



# BYPASS Andamento Percentuale sul totale interventi



# OAGB Andamento Percentuale sul totale interventi



# Trattamento farmacologico nel 2025

## 7.764 PAZIENTI TRATTATI CON FARMACO

