

Obesity and type 2 diabetes are frequent pathological conditions, often presenting in association in the same subject. Despite decades of research, the scientific interest in discovering and dissecting the mechanisms behind these two related metabolic disorders is still very high, with the aim to improve therapy, to permit an earlier and more precise diagnosis and phenotyping, and more importantly to discover new proteins and signaling pathways which may serve as new potential therapeutic targets.

With this background the Meeting will be focused on organs, cells and subcellular organelles which have been recently implicated in several biological processes interplaying with the genesis of obesity, insulin resistance and diabetes. Each Session will contain a Lecture from a recognized expert in the field, introducing the general theme, and two talks presenting original data in specific areas, with large space left to the general discussion.

We will start the Meeting learning the role of the Adipose Organ in insulin resistance from monogenic diseases, and unraveling new actors in the metabolic activity of White Adipose Tissue and the possibility to recruit and activate the Brown Adipose Tissue (Session I). Afterwards, the role of mitochondria, autophagy and circulating stem cells in metabolism (Session II) will be examined. Session III will dissect the new therapeutic strategies in obese and diabetic patients discussing the preliminary data under a clinical perspective. Sessions IV and V will be dedicated to the relationship between the ciliary dysfunction and metabolism, underlying the emerging role of the cilium structure in several pathways potentially connected with the metabolic homeostasis in different cells and tissues. In particular, Session V will focus on ALMS1 protein whose alterations are responsible for Alström Syndrome, a rare monogenic disease presenting childhood obesity, early and severe insulin resistance and often diabetes. This protein is a component of the centrosome and the basal body and, interacting with other proteins, could play a role in regulating the insulin sensitivity at different levels. In this Session we will also have the opportunity to explore the utility of some advanced technological approaches as the in silico Protein Modeling and the Next Generation Sequencing.

The Meeting will also host the ceremony award of the "PREMIO MARIO E LINA AUSTONI" when two young scientists will present their innovative researches in the field of metabolism. Finally, the Meeting will introduce the forthcoming Obesity Week (October 2-10 2015), seven days entirely dedicated to Obesity and Nutrition events with the participation of the Center for the Study and the Integrated Treatment of Obesity of the Veneto Region, directed by Prof. Roberto Vettor, Internal Medicine 3, Department of Medicine (DIMED), University of Padua.



liberati da un peso

## OBESITY WEEK 2-10 OTTOBRE 2015

### FACULTY:

Angelo Avogaro, Padova  
Philip L. Beales, London UK  
Alessandra Boletta, Milano  
Marco Boscaro, Padova  
Luca Busetto, Padova  
Stefano Cagnin, Padova  
Arianna Donella, Padova  
Roberto Fabris, Padova  
Gian Paolo Fadini, Padova  
Francesca Favaretto, Padova  
Paola Fioretto, Padova  
Carlo Foresta, Padova  
Brunella Franco, Napoli  
Andrea Frontini, Ancona  
Pietro Maffei, Padova  
Jan D. Marshall, Maine USA  
Gabriella Milan, Padova

Enzo Nisoli, Milano  
Marco Rossato, Padova  
Marco Sandri, Padova  
Marta Sanna, Padova  
Cesare Scandellari, Padova  
Robert K. Semple, Cambridge UK  
Roberto Serra, Padova  
Silvio Tosatto, Padova  
Elisabetta Trevellin, Padova  
Roberto Vettor, Padova

### SCIENTIFIC COMMITTEE

Gabriella Milan  
Francesca Favaretto  
Luca Busetto  
Pietro Maffei  
Roberto Vettor  
Clinica Medica 3, DIMED,  
Università di Padova

CON IL PATROCINIO DI:



UNIVERSITÀ  
DEGLI STUDI  
DI PADOVA



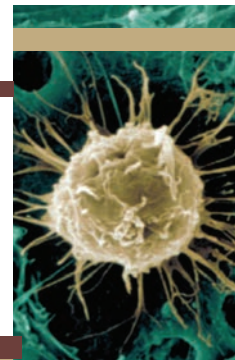
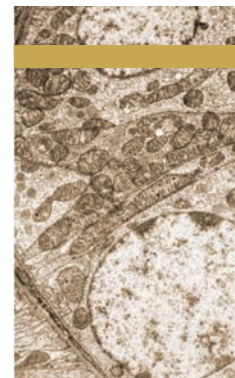
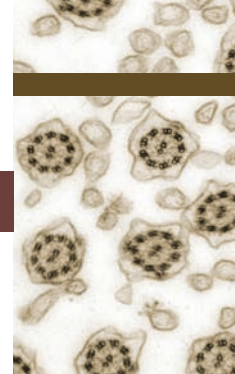
CON IL CONTRIBUTO  
NON CONDIZIONATO DI: **novo nordisk**

SEGRETERIA  
ORGANIZZATIVA

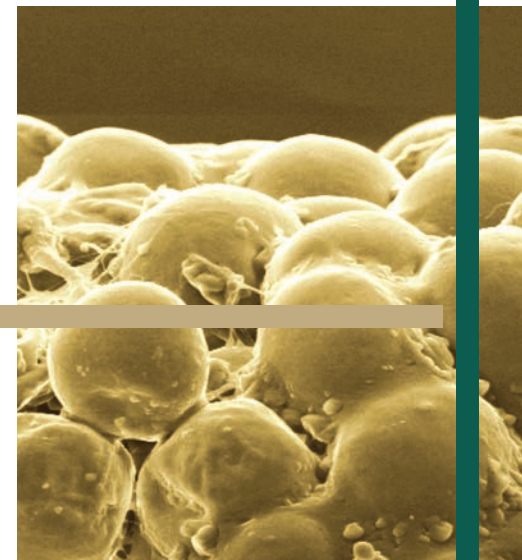


EOLO congressi eventi srl  
Via Vittorio Veneto n.11/18  
MONSELICE (PD)  
Tel. 0429 767381 - Fax 0429 711432  
cell. 392 6979059

INFO E ISCRIZIONI: [info@eolocongressi.it](mailto:info@eolocongressi.it) - [www.eolocongressi.it](http://www.eolocongressi.it)

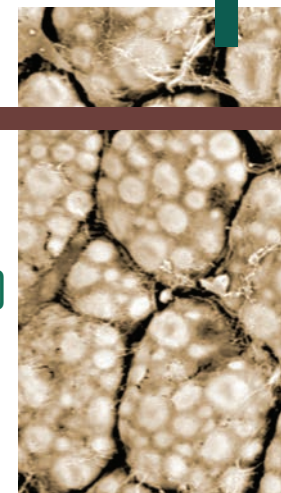


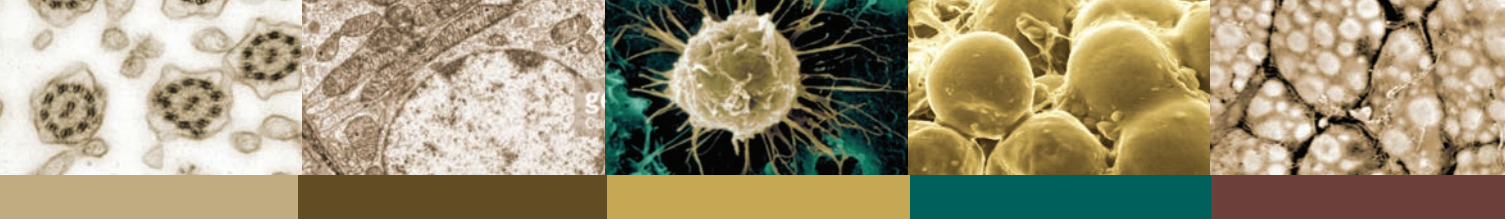
# NEW PATHOPHYSIOLOGICAL MECHANISMS IN OBESITY AND TYPE 2 DIABETES



OCTOBER 2<sup>ND</sup> 2015

AULA RAMAZZINI,  
POLICLINICO UNIVERSITARIO  
VIA GIUSTINIANI, 2  
PADOVA





08.30 Opening. Roberto Vettor-Pietro Maffei

### I SESSION: FOCUS ON ADIPOSE ORGAN

CHAIRMEN: Arianna Donella, Marco Rossato

08.45 LECTURE. **Robert K. Semple.** How is adipose tissue linked to insulin sensitivity? New lessons from monogenic disease

09.15 **Gabriella Milan.** White adipose tissue: new metabolic aspects

09.35 **Andrea Frontini.** Brown adipose tissue in humans: recruitment and activation

09.55 Discussion

10.15 -10.45 Coffee break

### II SESSION: FOCUS ON MITOCHONDRIA AND STEM CELL ABNORMALITIES

CHAIRMEN: Angelo Avogaro, Carlo Foresta

10.45 LECTURE. **Marco Sandri.** Autophagy and the control of mitochondria and metabolism

11.15 **Enzo Nisoli.** Mitochondria and metabolic diseases

11.35 **Gian Paolo Fadini.** Circulating stem cells in metabolic diseases

11.55 Discussion

### PREMIO MARIO E LINA AUSTONI

CHAIRMEN: Cesare Scandellari, Roberto Vettor

12.15 **Marta Sanna.** Lipomatous tissue: white, brown or beige?

12.30 **Elisabetta Trevillin.** Exercise and mitochondrial biogenesis in adipose tissue

12.45-14.00 Pausa

### III SESSION: NEW THERAPEUTIC STRATEGIES IN OBESE AND DIABETIC PATIENTS

CHAIRMEN: Roberto Fabris, Roberto Serra

14.00 **Roberto Vettor.** The incretin system revisited and GLP1 analogs

14.20 **Paola Fioretto.** SGLT2: more than a simple glucose lowering effect

### IV SESSION: FOCUS ON CILIARY DYSFUNCTION AND METABOLISM

CHAIRMEN: Pietro Maffei, Jan D. Marshall

14.40 INTRODUCTION. **Jan D. Marshall.**

14.50 LECTURE. **Philip L. Beales.** Bardet-Biedl Syndrome: the role of cilia in diabetes

15.20 **Brunella Franco.** A system biology approach to dissect new functions for ciliary proteins: the example of OFD1

15.40 **Alessandra Boletta.** Metabolic dysfunction in Polycystic Kidney Disease, the most frequent ciliopathy

16.00 Discussion

16.15-16.45 Coffee break

### V SESSION: FOCUS ON ALMS1 PROTEIN AND ITS INTERACTIONS

CHAIRMEN: Marco Boscaro, Luca Busetto

16.45 LECTURE. **Silvio Tosatto.** Protein modelling and ALMS1 function

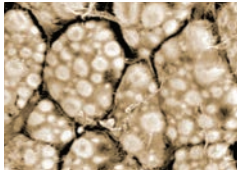
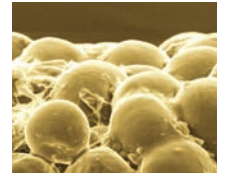
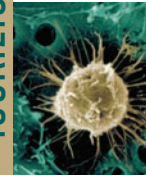
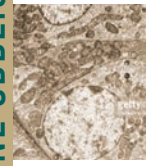
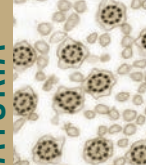
17.15 **Francesca Favaretto.** Alms1 expression in obesity models

17.35 **Stefano Cagnin.** Splice variants and secreted miRNAs characterization by NGS

17.55 Discussion

18.15 Concluding Remarks and Introduction to Obesity Week October 2-10 2015

SCHEDA DI ISCRIZIONE  
ISCRIZIONE OBBLIGATORIA



# NEW PATHOPHYSIOLOGICAL MECHANISMS IN OBESITY AND TYPE 2 DIABETES

OCTOBER 2<sup>ND</sup> 2015

AULA RAMAZZINI, POLICLINICO UNIVERSITARIO - VIA GIUSTINIANI, 2 - PADOVA

Compilare ed inviare al fax num. 0429 711432  
o tramite mail [info@eolocongressi.it](mailto:info@eolocongressi.it)  
È possibile effettuare l'iscrizione e la prenotazione  
on-line sul sito [www.eolocongressi.it](http://www.eolocongressi.it)

CONGRESSO IN LINGUA ITALIANA E IN INGLESE  
(NON DISPONIBILE LA TRADUZIONE SIMULTANEA)

CREDITI **DISCIPLINE:** MEDICI, BIOLOGI, TECNICI SANITARI DI  
ECM: 6 **LABORATORIO BIOMEDICO, FARMACISTI, PSICOLOGI,  
PSICOTERAPEUTI, CHIMICI, INFERMIERI, DIETISTI.**

Nome e Cognome partecipante

Professione e disciplina ECM

Cell. Telefono

E-mail

PRIVACY  **Acconsento**  **NON Acconsento**

Si informa che i dati da Lei forniti verranno trattati da Eolo congressi eventi Srl - Monselice (PD) per le procedure relative all'iscrizione al Congresso, nonché per l'invio di documentazioni relative ad altre iniziative da noi organizzate, nel rispetto della normativa sulla tutela dei dati personali di cui al D.lgs. 30/06/2003 n. 196 e successive modifiche.

Data Firma