

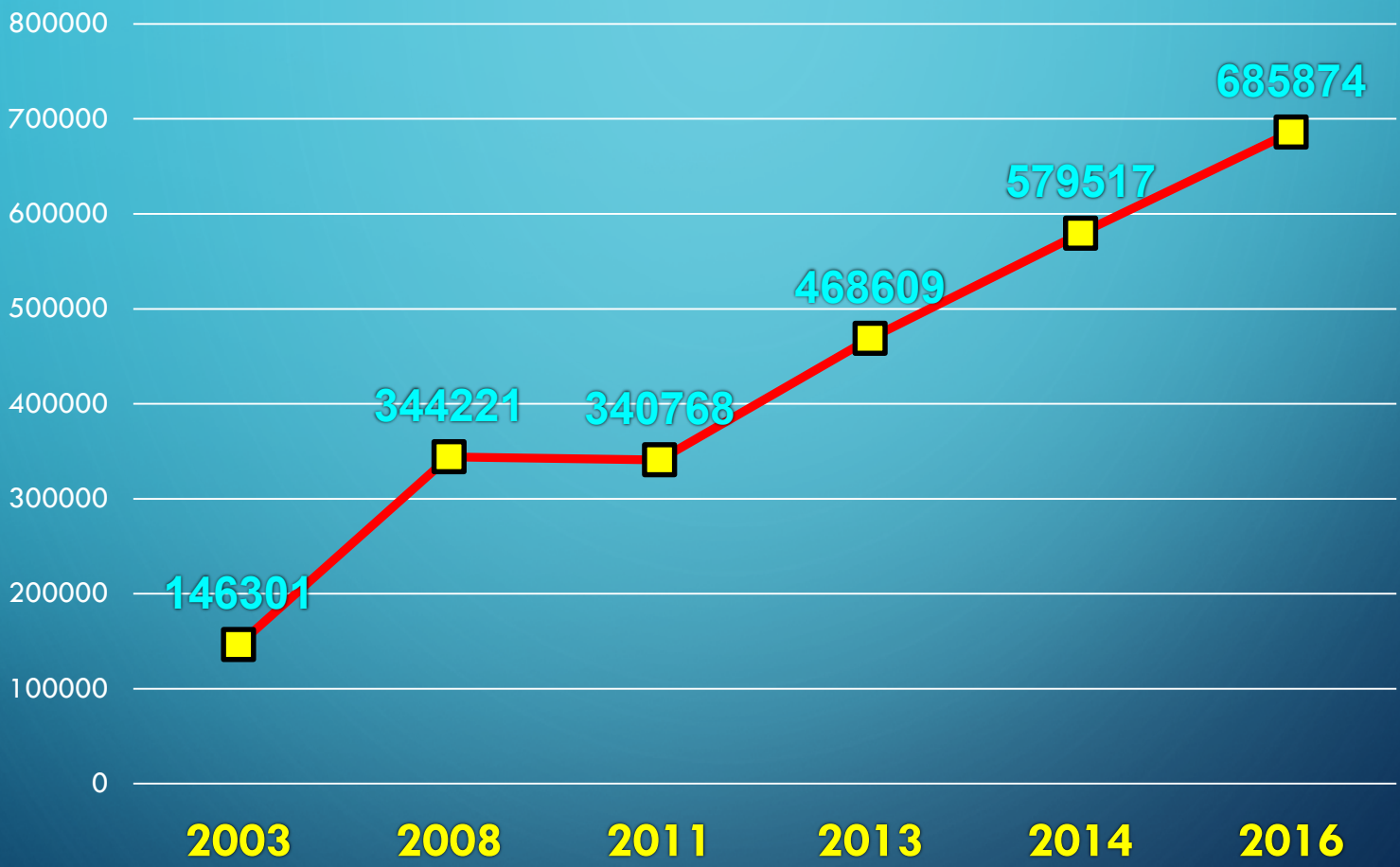
**XVIII CONGRESSO NAZIONALE SICOB**  
**20-21 Dicembre 2020**

**LA FORMAZIONE DEL CHIRURGO BARIATRICO  
ED I CRITERI DI ACCREDITAMENTO SICOb**

***Marcello Lucchese***

SOC Chirurgia Generale e Bariatrica  
Ospedale Santa Maria Nuova  
Firenze

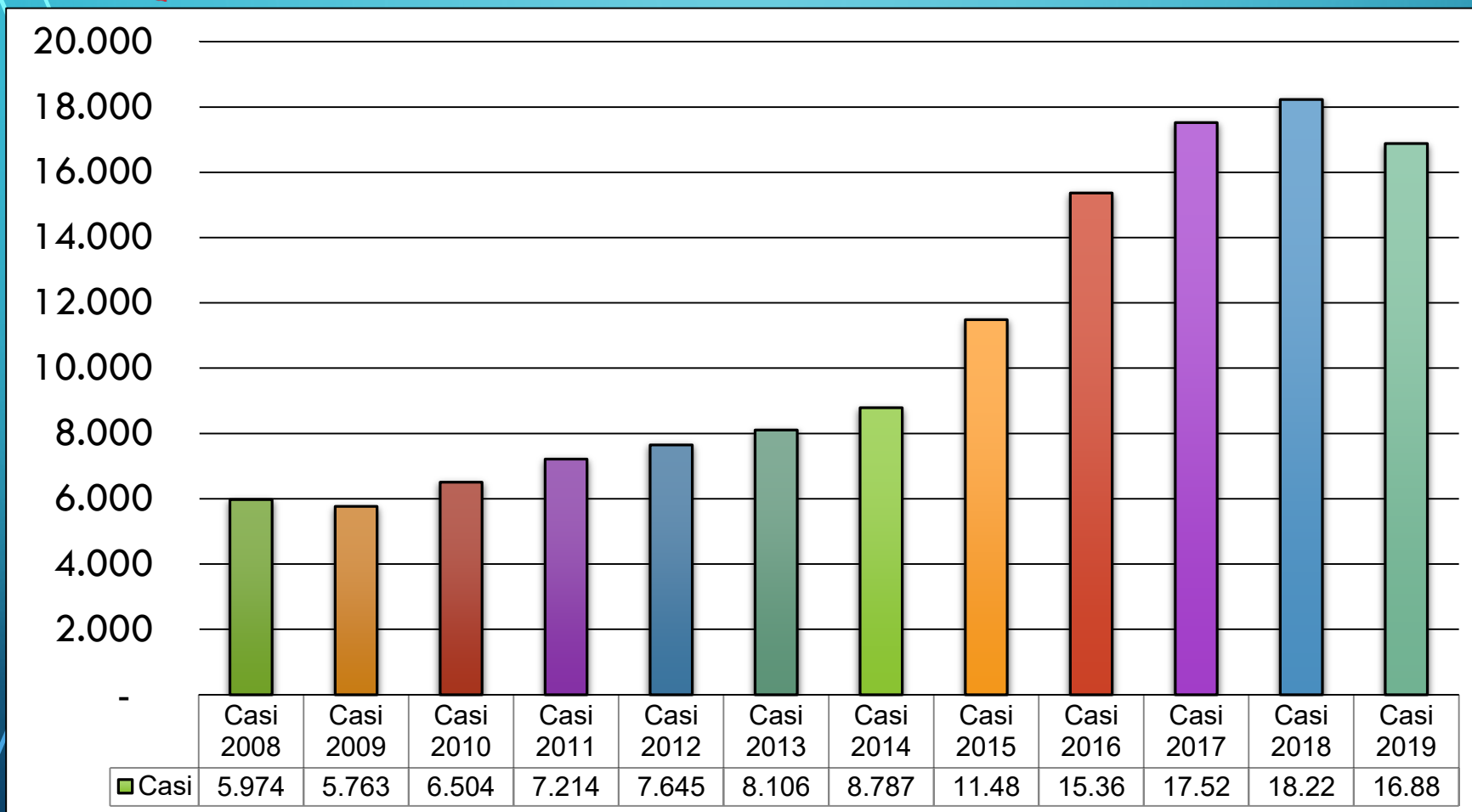
# CHIRURGIA BARIATRICA NEL MONDO



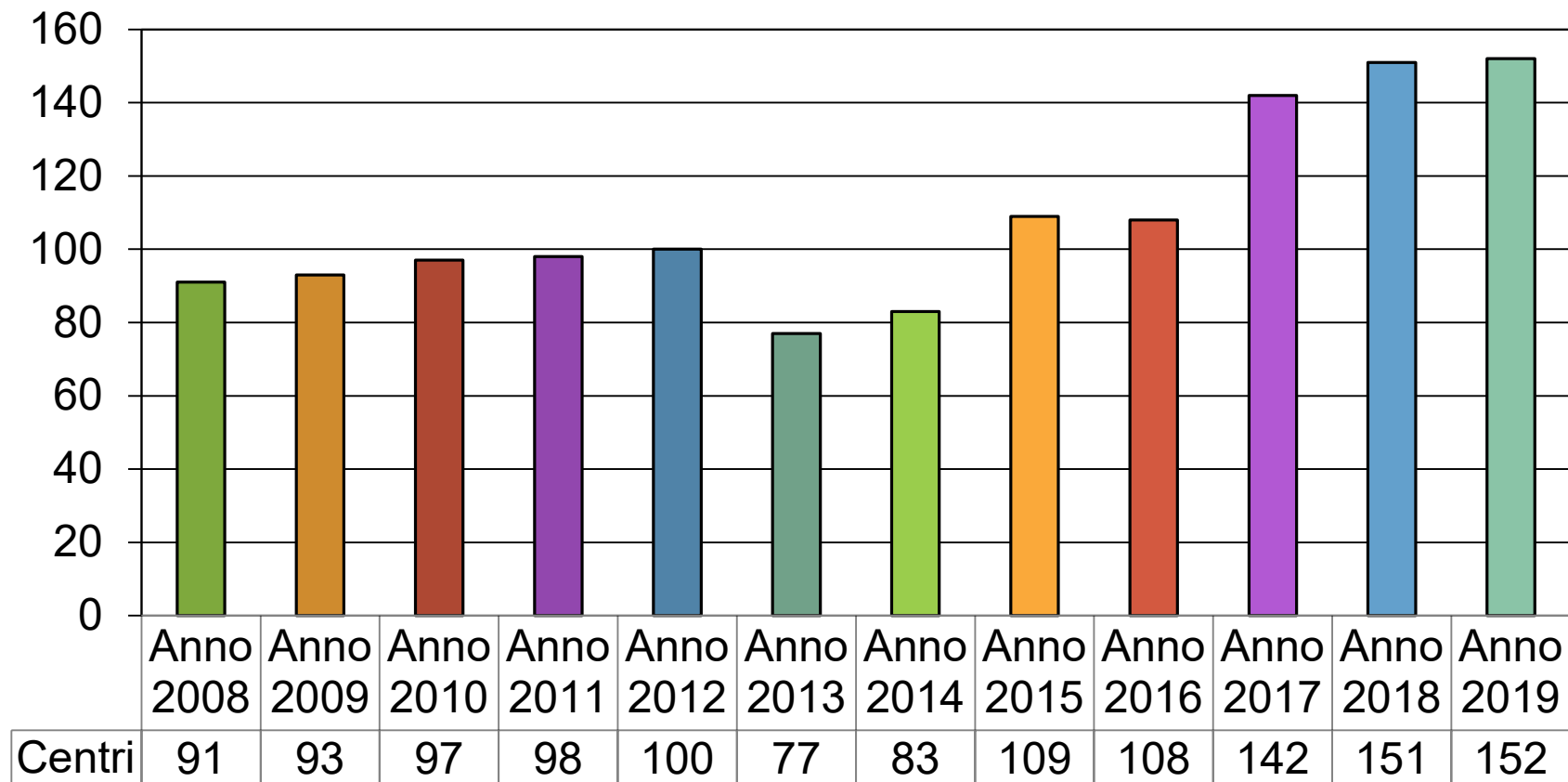
Angrisani et al. Bariatric Surgery and Endoluminal Procedures: IFSO Worldwide Survey 2014. *Obes Surg* 2017  
Angrisani et al. IFSO Worldwide Survey 2016: Primary, Endoluminal, and Revisional Procedures. *Obes. Surg* 2018

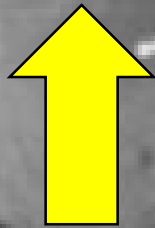


# CHIRURGIA BARIATRICA IN ITALIA



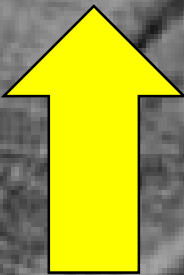
# CENTRI DI CHIRURGIA BARIATRICA IN ITALIA





NUMERO DI PROCEDURE  
E DI CENTRI

Ri ko



“NUOVI” CHIRURGHIE  
BARIATRICI

$$E = \frac{mc^2}{\sqrt{1 - \frac{v^2}{c^2}}}$$


# FORMAZIONE IN CHIRURGIA BARIATRICA




**HOT TOPIC!!!!**

# The value of surgical experience: excess costs associated with the Roux-en-Y gastric bypass learning curve

**SURG ENDOSC 2018**

Aristithes G. Doumouras<sup>1,2</sup>  · Fady Saleh<sup>2</sup> · Scott Gmora<sup>1,2</sup> · Mehran Anvari<sup>1,2</sup> · Dennis Hong<sup>1,2,3</sup>

Can a laparoscopic Roux-en-Y gastric bypass be safely performed by surgical residents in a bariatric center-of-excellence? The learning curve of surgical residents in bariatric surgery

Anne-Sophie van Rijswijk<sup>1</sup>  · Daan E. Moes<sup>1</sup> · Noëlle Geubbels<sup>1</sup> · Barbara A. Hutten<sup>2</sup> · Yair I. Z. Acherman<sup>1</sup> · Arnold W. van de Laar<sup>1</sup> · Maurits de Brauw<sup>1</sup> · Sjoerd C. Bruin<sup>1</sup>

**SURG ENDOSC 2018**

## Mastery in Bariatric Surgery: The Long-term Surgeon Learning Curve of Roux-en-Y Gastric Bypass

*Aristithes G. Doumouras, MD, MPH,\*† Fady Saleh, MD, MPH,† Sama Anvari,† Scott Gmora, MD,\*† Mehran Anvari, MD, PhD,\*† and Dennis Hong, MD, MSc\*†*

**ANN SURG 2017**

## The Preceding Surgeon Factor in Bariatric Surgery: a Positive Influence on the Learning Curve of Subsequent Surgeons

Noëlle Geubbels · L. Maurits de Brauw · Yair I. Z. Acherman · Arnold W. J. M. van de Laar · Michel W. J. M. Wouters · Sjoerd C. Bruin

**SURG ENDOSC 2015**

## Surgical trainee impact on bariatric surgery safety

Iliya Goldberg<sup>1</sup>  · Jie Yang<sup>2</sup> · Jihye Park<sup>3</sup> · Aurora D. Pryor<sup>1</sup> · Salvatore Docimo Jr.<sup>1</sup> · Andrew T. Bates<sup>1</sup> · Mark A. Talamini<sup>1</sup> · Konstantinos Spaniolas<sup>1</sup>

**SURG ENDOSC 2019**

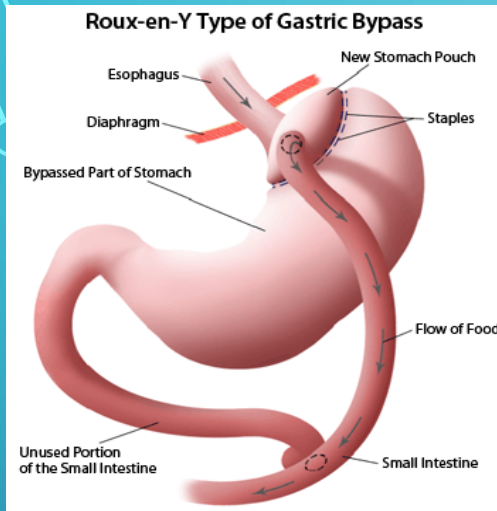
# METODICHE DI APPRENDIMENTO



- ✓ Corsi “Hands-on” (cadavere/animale)
- ✓ Forward-chaining
- ✓ Preceptorship e/o proctorship
- ✓ Mini-fellowship
- ✓ Long-lasting fellowship

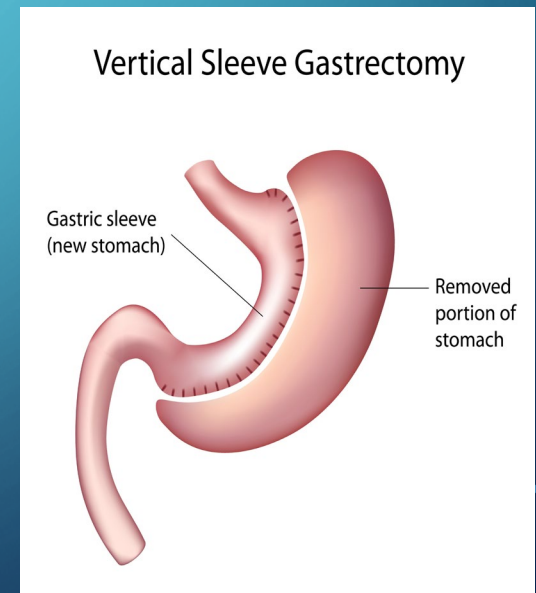


# LEARNING CURVE



75-150 PROCEDURE

28-68 PROCEDURE



*La durata dell'intervento e l'incidenza di complicanze post-operatorie sono gli unici indici di successo della Chirurgia Bariatrica?*



*...in 1990, when I was a young general surgeon, I thought to take care of obesity surgery... I never knew why !*

*I had heard something about an Italian surgeon already known in the world and I decided to ask him to teach me this field of surgery...*



*He was very kind but the first thing he told me was:*

*"Are you sure of what you're doing?" ....*

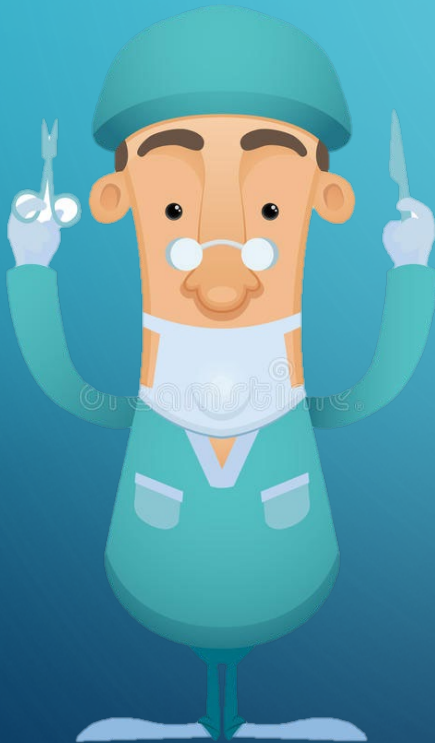
*then he said, "bariatric surgery is no more than general surgery performed in extremely difficult patients..."*

*The problem is not about the surgical technique, but is a cultural issue*

*... first of all you need to know the obesity disease, this type of people, the social problem.*

*Our difficulty is not so much before or during surgery but what will happen next ...*

**FINCHE'  
MORTE NON  
VI SEPARI**



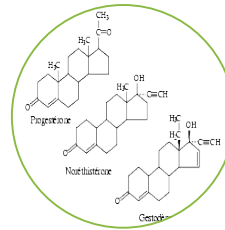
# TEAM MULTIDISCIPLINARE



**DIETISTA**



**CHIRURGO**



**ENDOCRINOLOGA**



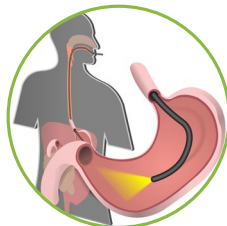
**PSICHIATRA**

**Assistenza continua**

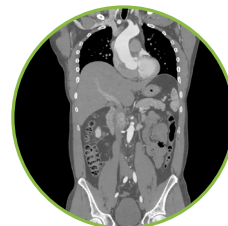
# CENTRO MULTIDISCIPLINARE



ICU



ENDOSCOPIA



RADIOLOGIA  
INTERVENTISTICA



CHIRURGIA  
PLASTICA

**Assistenza continua**

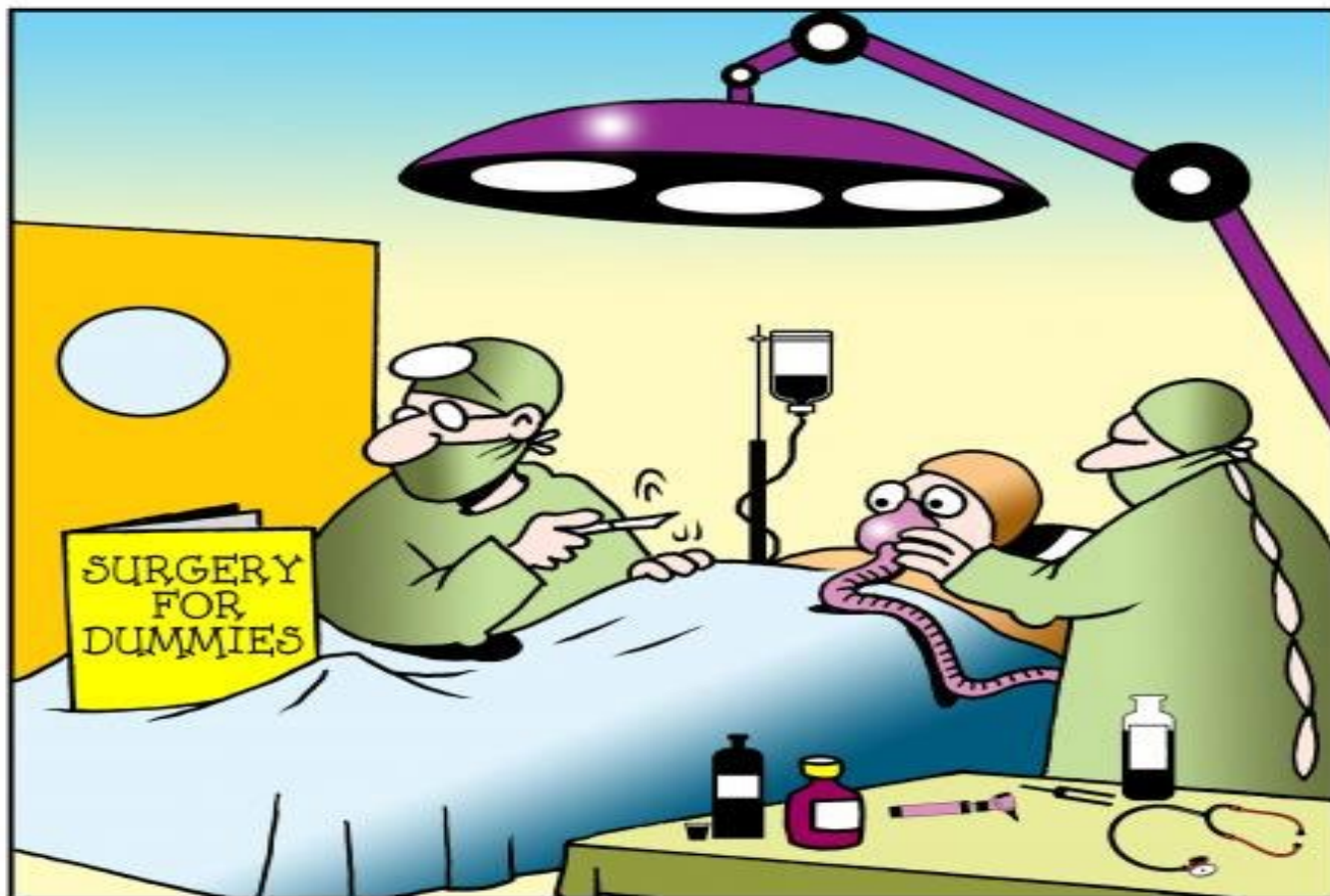


REPARTI  
ATTREZZATI



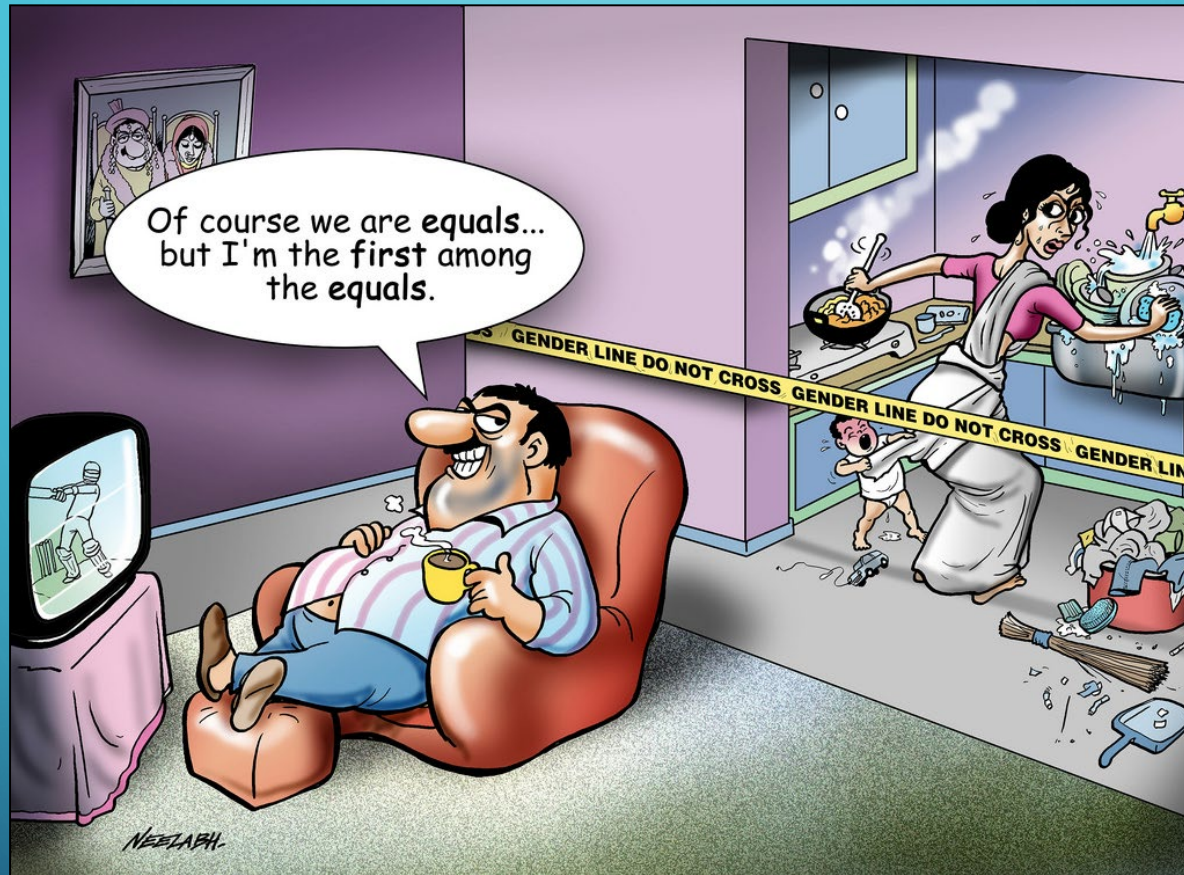
PERSONALE  
INFIERMERISTICO  
ADDESTRATO

# IN CASO DI COMPLICANZE



GESTIONE "DEDICATA"

# CHIRURGO BARIATRICO



“PRIMUS INTER PARES”



FORMAZIONE DEL  
CHIRURGO  
BARIATRICO



ACCREDITAMENTO  
DEL CENTRO DI  
CHIRURGIA  
BARIATRICA



# STANDARDS MANUAL V2.0

Resources for Optimal Care  
of the Metabolic and Bariatric  
Surgery Patient 2016

IMPROVING HEALTH.  
TRANSFORMING LIVES.



## AMERICAN COLLEGE OF SURGEONS & AMERICAN SOCIETY FOR BARIATRIC AND METABOLIC SURGERY (ASMBS)

# INTERNATIONAL FEDERATION FOR THE SURGERY OF OBESITY AND METABOLIC DISORDERS (IFSO)



## Bariatric Center of Excellence

The ASMBS Bariatric Surgery Center of Excellence® (BSCOE) designation helps identify where patients like you can expect to receive safer and more effective surgical treatment. Our program is tough, comprehensive and increasingly recognized by leading government and private insurers when making coverage decisions.



The International Federation for the Surgery of Obesity and Metabolic Disorders (IFSO)





**CENTRI DI  
ECCELLENZA SICOB**

# CREDENZIALI CHIRURGICHE

	CENTRO DI ECCELLENZA	CENTRO ACCREDITATO	CENTRO AFFILIATO
<b>N. Procedure riconosciute SICOB</b>	<b>≥ 4</b>	<b>≥ 3</b>	<b>≥ 2</b>
<b>Procedure/anno</b>	<b>≥ 100</b>	<b>≥ 50</b>	<b>≥ 25</b>
<b>Chirurgia di revisione</b>	<b>SI (&gt; 15/anno)</b>	<b>NO</b>	<b>NO</b>

# CREDENZIALI DEL CENTRO BARIATRICO\*

	CENTRO DI ECCELLENZA	CENTRO ACCREDITATO	CENTRO AFFILIATO
<b>Selezione pazienti (PDTA formalizzato)</b>	<b>SI</b>	<b>SI</b>	<b>SI</b>
<b>Casistica nel Registro SICOB</b>	<b>SI</b>	<b>SI</b>	<b>SI</b>
<b>Follow-up nel Registro SICOB</b>	<b>≥ 50%</b>	<b>≥ 50%</b>	<b>≥ 50%</b>
<b>Terapia intensiva</b>	<b>Nel Centro</b>	<b>Nel Centro</b>	<b>Nel Centro/ Convenzione</b>

\* Valutazioni annuali della Commissione di accreditamento

# CENTRI SICOB



- ✓ Eccellenza: 40
- ✓ Accreditati: 16
- ✓ Affiliati: 18

SICOB



ACOI





# CONCLUSIONI

- ✓ La Chirurgia Bariatrica si fonda su un approccio multidisciplinare con la creazione di un Team dedicato che metta in atto percorsi diagnostico-terapeutici specifici e si faccia carico del follow-up a lungo termine del paziente bariatrico
- ✓ La formazione del Chirurgo Bariatrico non può essere finalizzata solamente all'acquisizione di competenza tecniche
- ✓ L'accreditamento rappresenta uno strumento efficace per garantire i migliori standard di cura del paziente sottoposto ad intervento di chirurgia bariatrica



**GRAZIE PER  
L'ATTENZIONE**